

U.S. PUBLIC LAND SURVEY MONUMENT RECORD

For Public Land Survey Corners In:
T. 4 N. R. 14 E. 4th P.M.
CORNER CODE INDEX

WI ADMINISTRATIVE CODE A-E 7.08 REQUIREMENT
REV 10/23/2004 USMONREC.DWG

L/MA TWP

ROCK COUNTY WI

IF AVAILABLE
ROCK COUNTY COORDINATES PREFERRED

A	2	3	4	5	6	7	8	9	10	11	12	13	14	15	16	17	18	19	20	21	22	23	24	25	A
B		6				5				4				3				2			1				B
C																									C
D																									D
E																									E
F																									F
G																									G
H																									H
J																									J
K																									K
L																									L
M																									M
N																									N
O																									O
P																									P
Q																									Q
R																									R
S																									S
T																									T
U																									U
V																									V
W																									W
X																									X
Y																									Y
Z																									Z

North _____ Elev. _____

East _____

Hor. Datum _____ Vert. Datum _____

LATITUDE _____ ELLIPS. HT. _____

LONGITUDE _____

NAD83(91) _____ NETWORK ADJ. YR _____

GPS (X) _____ TRAVERSE (X) _____

BASED ON THE FOLLOWING CONTROL:

PLACE MONUMENT SYMBOL AT PROPER LOCATION ON ABOVE INDEX

CORNER MONUMENT

WITNESS MONUMENT

(a) BEARINGS ARE BASED ON: _____

FIELD BOOK _____ PAGE # _____

SHEET 1 OF 1

SHOW A PLAN VIEW DRAWING DEPICTING THE CORNER MONUMENT AND SURROUNDING PHYSICAL FEATURES, INCLUDING THE EXCAVATION AREA AND DEPTH.

PLANNING & ZONING COMMITTEE ADOPTED THIS FORM ON 12/2/1982

CORNER CODE G-25(2)

RECORD OF U. S. PUBLIC LAND SURVEY CONTROL STATION

U. S. PUBLIC LAND SURVEY CORNER 12/7 T 4 N, R 14/15 E, ROCK/WALWORTH COUNTY, WISCONSIN
12/7

HORIZONTAL CONTROL SURVEY BY: AYRES ASSOCIATES YEAR: 2004
 VERTICAL CONTROL SURVEY BY: AYRES ASSOCIATES YEAR: 2004

STATE PLANE COORDINATES OF: QUARTER SECTION CORNER
 NORTH 301,268.04
 EAST 2,328,087.03

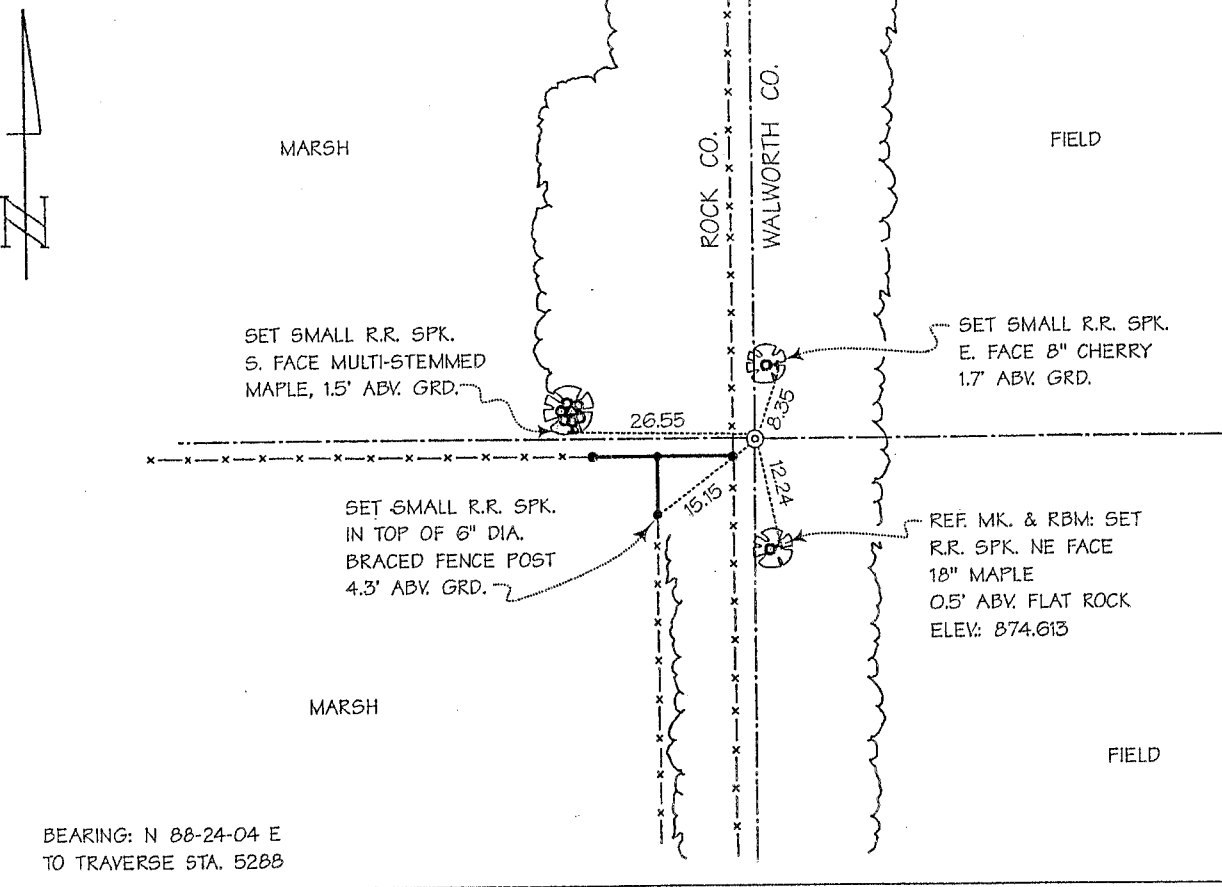
ELEVATION OF STATION: 873.971

HORIZONTAL DATUM: WISCONSIN STATE PLANE COORDINATE SYSTEM, SOUTH ZONE
 NORTH AMERICAN DATUM OF 1927

VERTICAL DATUM: NATIONAL GEODETIC VERTICAL DATUM OF 1929 THETA ANGLE: +0-50-24

CONTROL ACCURACY:
 HORIZONTAL: THIRD ORDER, CLASS I VERTICAL: SECOND ORDER, CLASS II

LOCATION SKETCH:

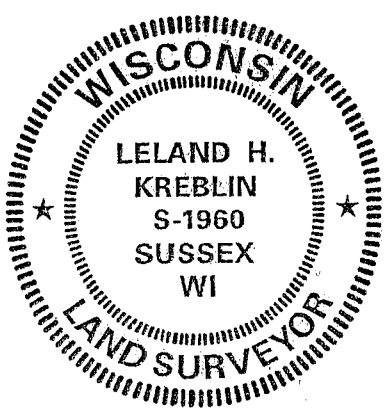


BEARING: N 88-24-04 E
 TO TRAVERSE STA. 5288

SURVEYOR'S AFFIDAVIT:

STATE OF WISCONSIN) SS
 WALWORTH COUNTY)

As Walworth County Surveyor, I hereby certify that I found a plastic monument with Rock County aluminum cap as set in September 1982 by Donald A. Barnes, S-1216, Rock County Surveyor; said monument having been set by Mr. Barnes on the easterly extension of the one-quarter section line from the monumented center of Section 12, Township 4 North, Range 14 East, through the monumented south one-sixteenth corner of the northeast one-quarter of said Section 12; using single proportionate measurement of the monumented distance and the extension distance; that excavation by Mr. Barnes of an area of 9 feet by 4.5 feet to a depth of 1.5 feet did not reveal the existence of any monumentation marking this corner; that I referenced the same as shown hereon; and that this record is correct and complete to the best of my knowledge and belief.



DATE OF SURVEY: 18 NOVEMBER 2004 Leland H. Kreblin S - 1960
 REVISED: 25 MAY 2005 REGISTERED LAND SURVEYOR

G-25(2)