

# U.S. PUBLIC LAND SURVEY MONUMENT RECORD

For Public Land Survey Corners in:

WI ADMINISTRATIVE CODE A-E 7.08 REQUIREMENT

T. 5 N., R. 14 E

### CORNER CODE INDEX

A	1	2	3	4	5	6	7	8	9	10	11	12	13	14	15	16	17	18	19	20	21	22	23	24	25
B																									
C	6																								
D																									
E																									
F	1																								
G		8																							
H																									
J																									
K	18																								
L		11																							
M																									
N																									
O																									
P	19																								
Q		20																							
R																									
S																									
T	30																								
U		29																							
V																									
W																									
X	31																								
Y		32																							
Z																									

KOSHKONONG TWP

ROCK COUNTY WI

IF AVAILABLE  
ROCK COUNTY COORDINATES PREFERRED

North \_\_\_\_\_ Elev. \_\_\_\_\_

East \_\_\_\_\_

Hor. Datum \_\_\_\_\_ Vert. Datum \_\_\_\_\_

LATITUDE \_\_\_\_\_ ELLIPS. HT. \_\_\_\_\_

LONGITUDE \_\_\_\_\_

GPS (X) \_\_\_\_\_ TRAVERSE (X) \_\_\_\_\_

BASED ON THE FOLLOWING CONTROL:

PLACE MONUMENT SYMBOL  $\blacklozenge$  AT PROPER LOCATION ON ABOVE INDEX

$\blacklozenge$  CORNER MONUMENT

$\circ$  WITNESS MONUMENT

(a)

THOMAS WOLLIN, JEFFERSON COUNTY SURVEYOR, PROVIDED THE STATE PLANE COORDINATES FOR CORNER CODE #5301 CORSE SEC 35 T 5 N R 14 E

STATE PLANE COORDINATES N/S 309,628,240  
NAD 1983/91 OF RECORD E/W 2,291,185,665

I DONALD BARNES CONVERTED THE ABOVE COORDINATES TO THE FOLLOWING:

LATITUDE 42-50-35.30261  
LONGITUDE 88-47-48.44016  
MERIDIAN CONV. 0-49-36.2  
SCALE FACTOR 0.9999796719

ROCK COUNTY COORDINATES (NAD 1983/91)

N/S 327,650,529  
E/W 553,874,225  
SCALE 1,0000022344

CONVERGENCE: THE ANGULAR DIFFERENCE BETWEEN THE GEODETIC NORTH & THE ROCK COUNTY MERCATOR NORTH

$\oplus$  DEG 0 MIN // SEC 14.3

BEARINGS ARE BASED ON:

*Donald Barnes*  
2/12/03

FIELD BOOK \_\_\_\_\_ PAGE # \_\_\_\_\_

SHEET 1 OF 1

SHOW A PLAN VIEW DRAWING DEPICTING THE CORNER MONUMENT AND SURROUNDING PHYSICAL FEATURES, INCLUDING THE EXCAVATION AREA AND DEPTH.

PLANNING & ZONING COMMITTEE ADOPTED THE ABOVE FORM ON 12/2/1982

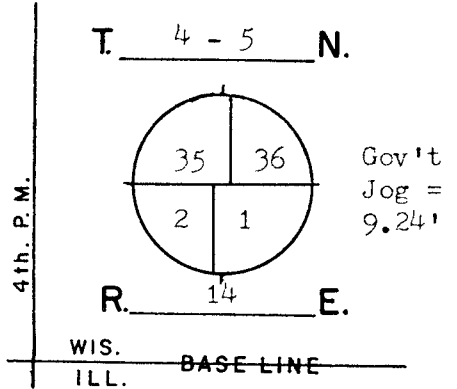
File in Lima Twp  
CORNER CODE A-21/22

# GOVERNMENT LAND CORNER RECORD\*

## JEFFERSON COUNTY

CORNER NO. 5301

TYPE OF MONUMENT Aluminum Magnetized  
 STATE PLANE COORDINATES N. 309628.240  
NAD 1983/91 E. 2291185.665 SE-35  
 ELEVATION M.S.L. DATUM: \_\_\_\_\_  
 Grid-Ground 1.0000578079  
 FIELD BOOK Koshkonong p. 87  
 DRAWN BY TRW



### BASIS FOR MONUMENTATION

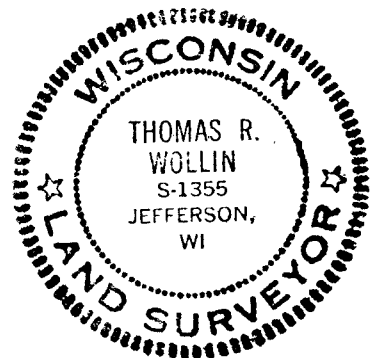
Original Survey, 1834-37, Wood Post & Bearing Trees  
Resurvey of Koshkonong Township, by Milo C. Jones,  
August-December, 1886. Field notes say that the  
corner was verified. A limestone monument, Approx.  
6" by 36" long with a squared finished top, was set  
for the corner. Notes recorded in the Register of  
Deeds, Miscellaneous Volume 1, pages 389-412.

1963, The stone monument was dug for by Rock County  
Surveyor, prior to the road intersection being rebuilt.  
The stone was not found and the corner was re-established  
for NE-2 on a straight-line between S $\frac{1}{4}$ -35 and SE-36.  
An iron rod was set for NE-2. Rock Co. Surveyor  
Records.

1979, Set an Aluminum Magnetized Monument for SE-35  
on the line established by Rock County and at the  
Jog distance East of 9.24'.

3/18/2002, G.P.S. coordinates are assigned. A Topcon  
GP-SX1 single-frequency receiver was used.

SEAL:

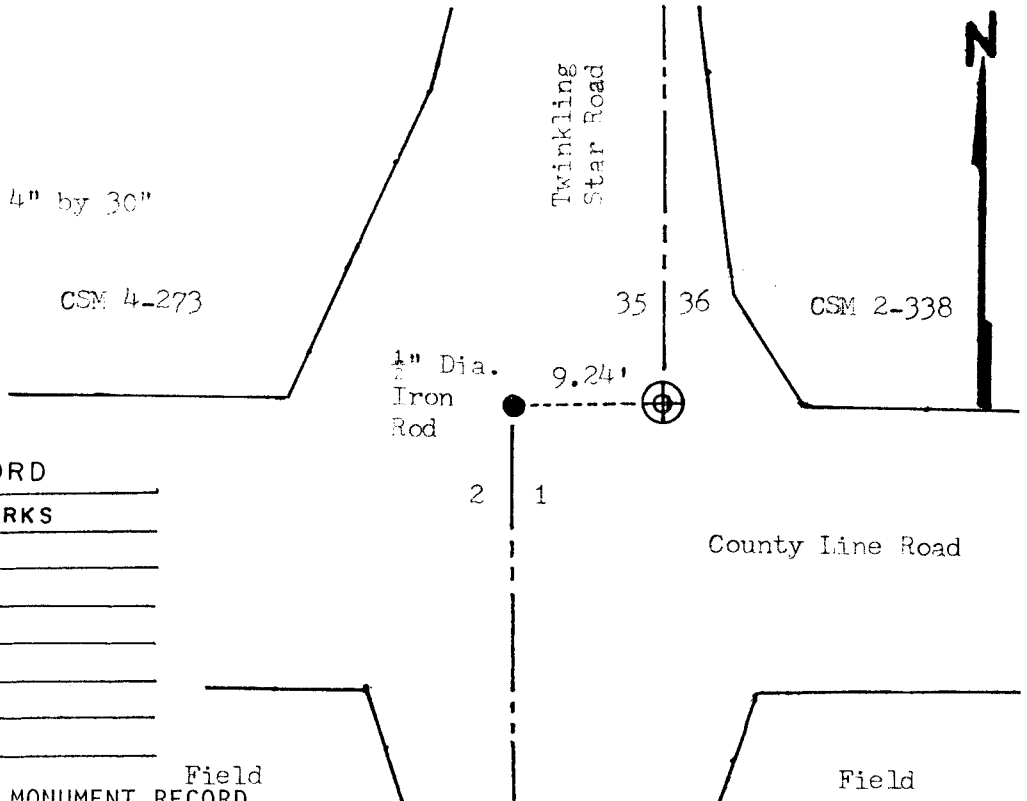


DATA SHOWN HERE ON  
 CERTIFIED CORRECT:

*Thomas R. Wollin*  
 REGISTERED LAND SURVEYOR  
 DATED 5/27/1982

### LOCATION SKETCH

- SQUARE CUT LIMESTONE
- CONCRETE / BRASS CAP
- ALUMINUM MAGNETIZED 4" by 30"
- IRON PIPE
- RR SPIKE
- PK NAIL
- FENCE
- UTILITY POLE
- STEEL POST / SIGN



### MAINTENANCE RECORD

DATE	INIT.	REMARKS

\* U.S. PUBLIC LAND SURVEY MONUMENT RECORD

A-21/22