

**MICROFILMED**

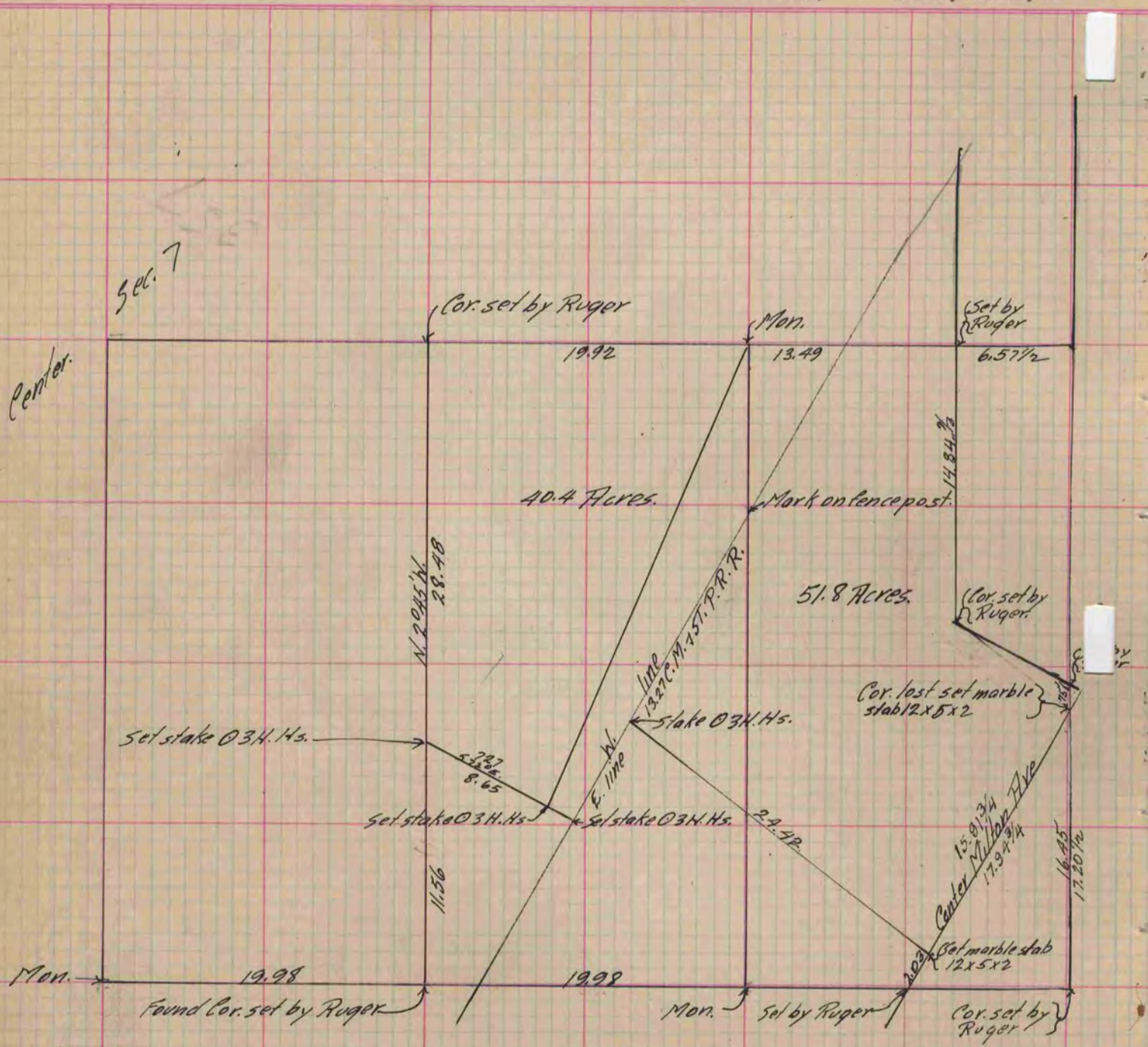
# PLAT AND RECORD

Of a Survey on Section <sup>SE 1/4</sup> 7 T 3 R 13 E. of the 4 P. M. in Harmony Township  
W 1/2, S. W 1/4 8 3 13  
Rock County, Wisconsin, made October the 6 + 7 1891

COUNTY BUILDING  
CITY OF JANESVILLE

I hereby certify that the following is a correct record of said survey as made by me.

(Signed) O. G. Bleedorn Dep.  
R. H. B. County Surveyor.



Copied from P. 357 Vol. 2 County Surveyor's Record.