

MICROFILMED

PLAT AND RECORD

COUNTY BUILDING
CITY OF JANESVILLE

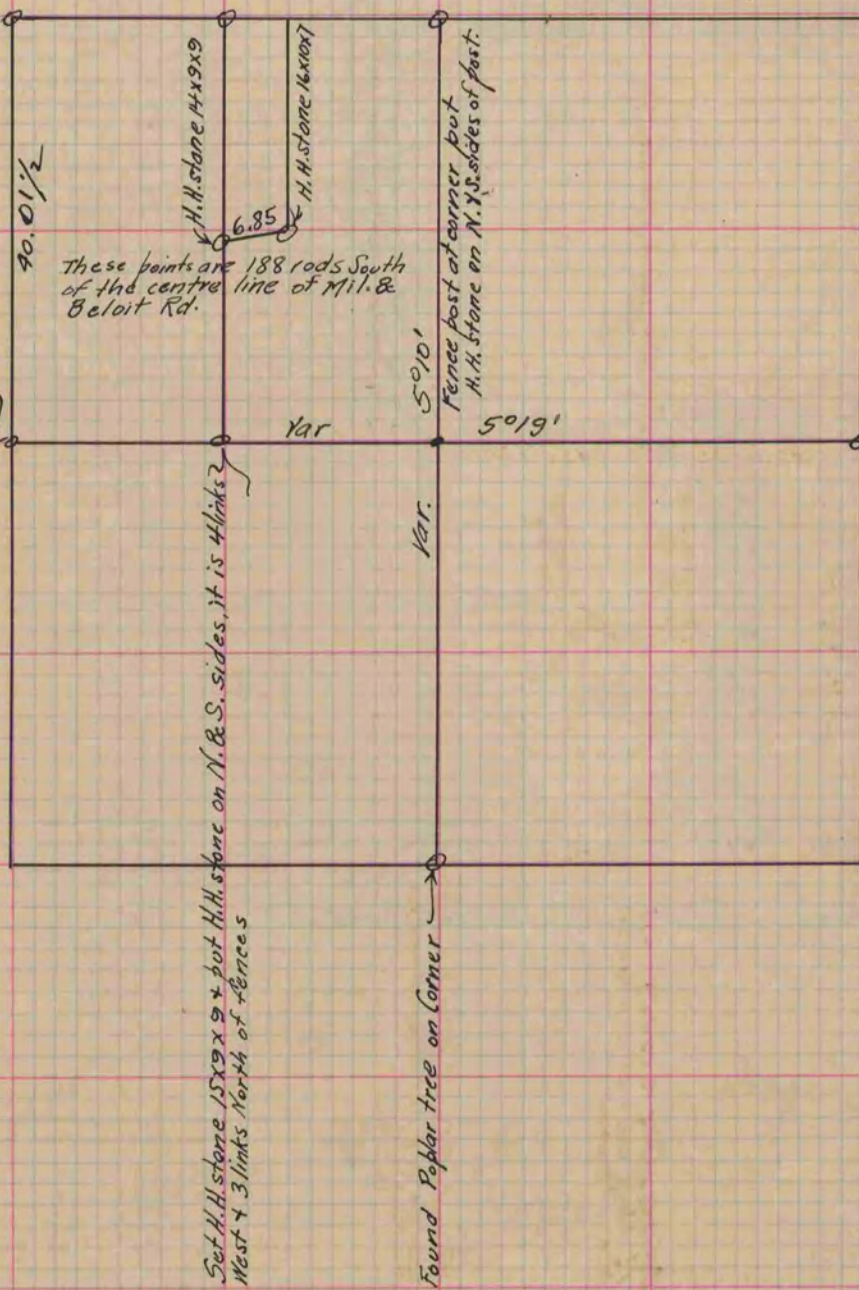
Of a Survey on Section 11 T 1 R 14 E. of the 4 P. M. in Clinton Township

Rock County, Wisconsin, made October the 13 1871

I hereby certify that the following is a correct record of said survey as made by me.

(Signed) Edward Ruger
R. H. B. County Surveyor.

See Section 2 Clinton Page 45



Copied from Page 46 Vol. 2. Original County Surveyors Record