

MICROFILMED

PLAT AND RECORD

Of a Survey on Section 19 T 3 R 13 E. of the 4 P. M. in Harmony Township

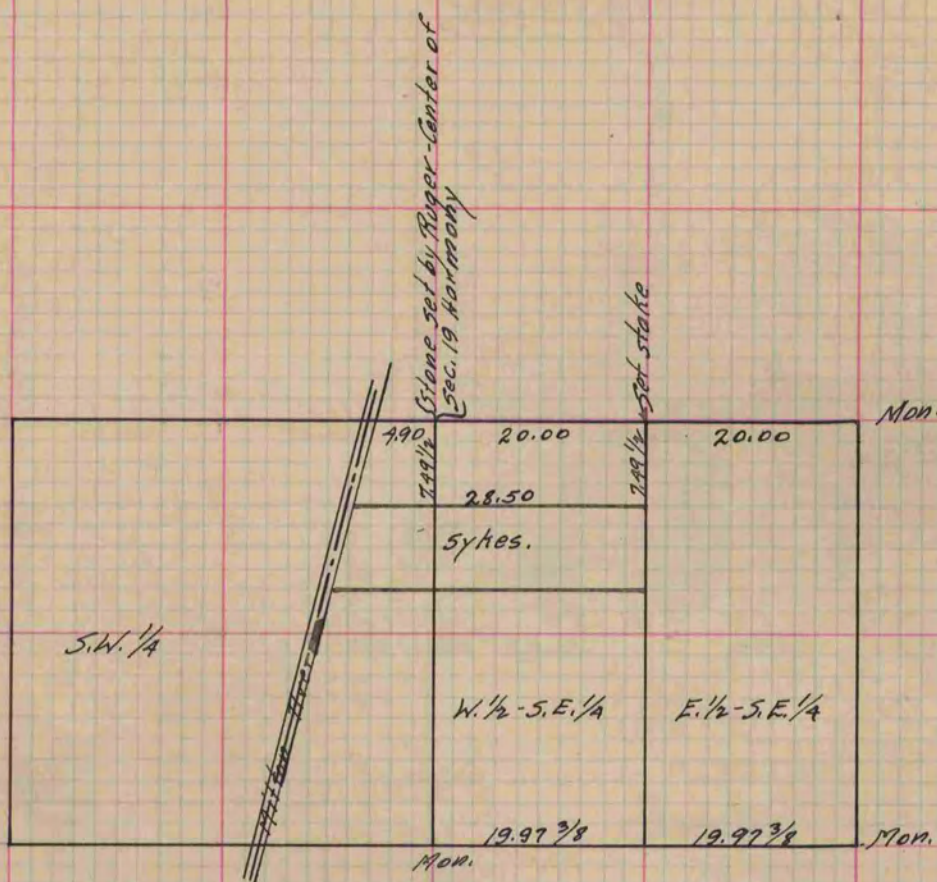
Rock County, Wisconsin, made June the 10th 1872

I hereby certify that the following is a correct record of said survey as made by me.

COUNTY BUILDING
CITY OF JANESVILLE

(Signed) R. K. Lee
R. H. B.

{ Deputy
County Surveyor.



Copied from Page 52 Vol. 2 Original County Surveyors Record.