

# PLAT AND RECORD

**MICROFILMED**

Of a Survey on <sup>S.E. 1/4</sup> Section 22 T 3 R 12 E. of the 4 P. M. in Janesville Township

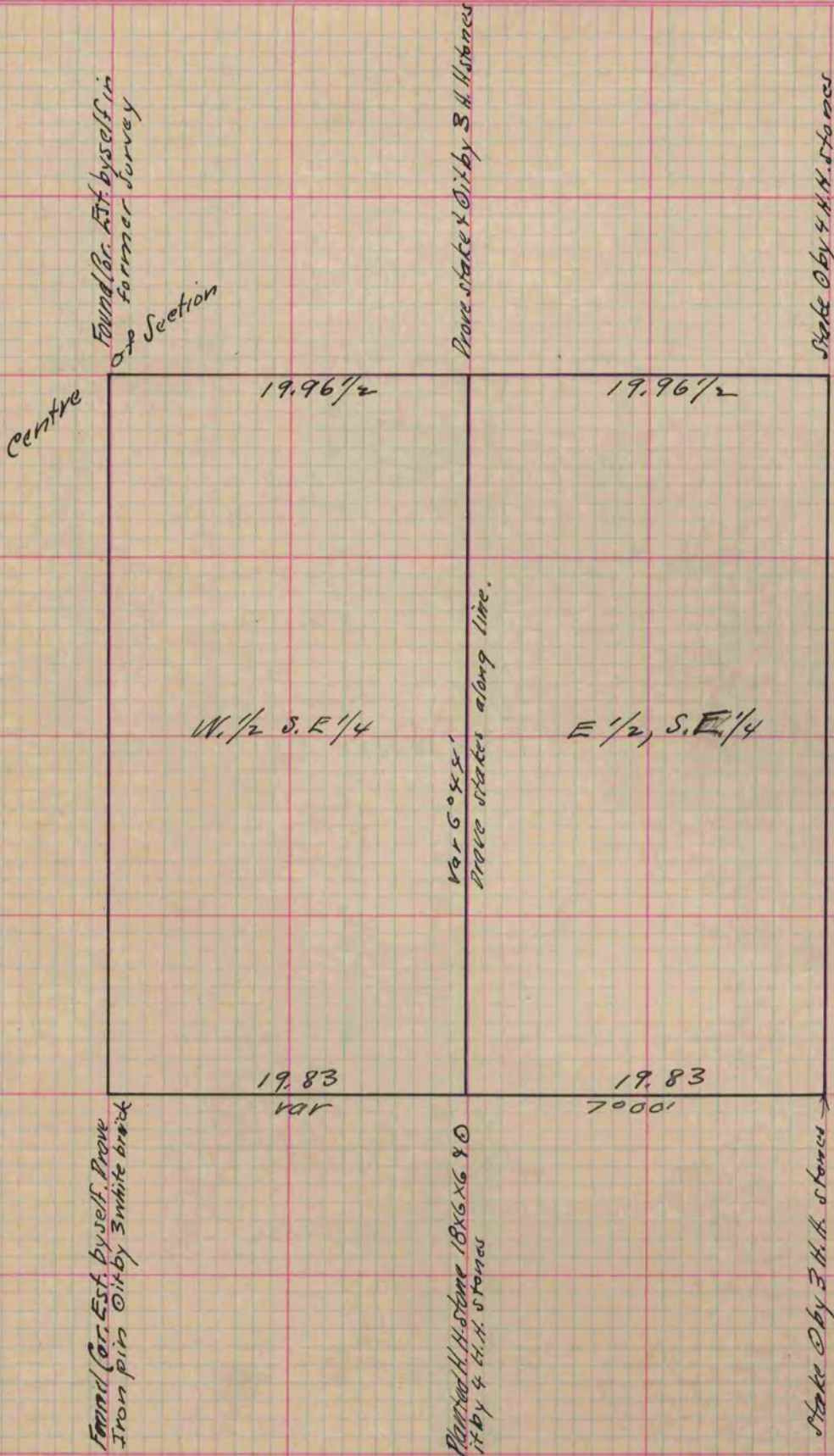
Rock County, Wisconsin, made April the 15 1875

I hereby certify that the following is a correct record of said survey as made by me.

COUNTY BUILDING  
CITY OF JANESVILLE

(Signed) Edward Ruger  
R.H.B.

County Surveyor.



Copied from Page 142 Vol. 2. Original County Surveyors Record.