

PLAT AND RECORD

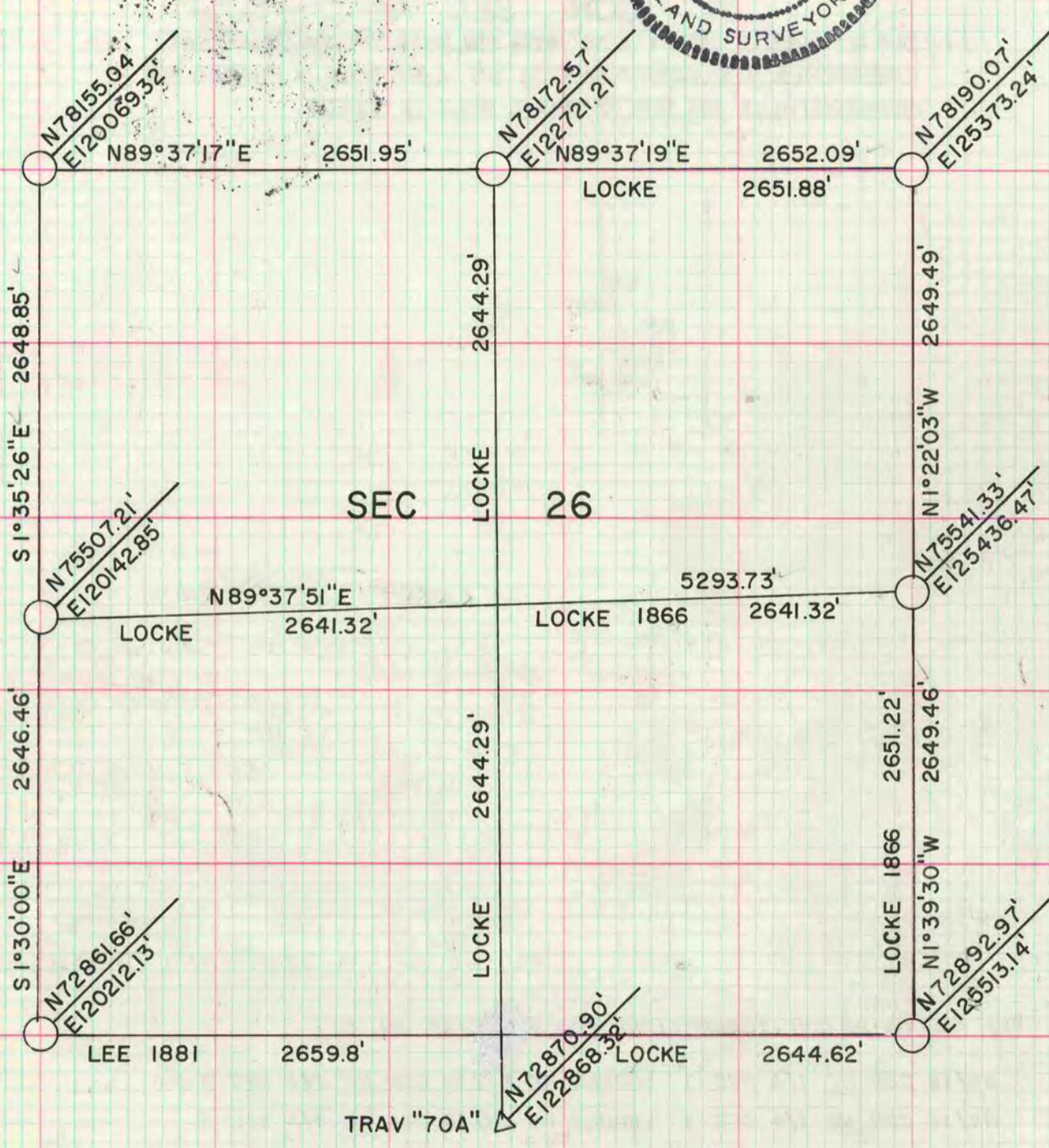
VOL. 6

Of a Survey on Section **26** T **1** R **14** E. of the 4 P. M. in **CLINTON** Township

Rock County, Wisconsin, made **DEC** the

I hereby certify that the following is a correct record of said survey as made by

**COUNTY BUILDING
CITY OF JANESVILLE**



MICROFILMED

TRAV "70A" PK SET AT THE CENTER OF THE PVMT & ON LINE WITH FENCES TO THE NORTH & SOUTH.

CENTER OF SECTION: THE CORNER IS IN THE FARM FIELD AND WAS DESTROYED.

CORNER 694.16' N OF S 1/4 COR: DUG AND FOUND NOTHING

CORNER 1322.15 N OF S 1/4 COR: CORNER DESTROYED BY DITCH AND FARM FIELD

S 1/4 COR: THE CORNER SHOULD BE DUG FOR AGAIN. PROBABLY 6.4' NORTH OF TRAV "70A"