

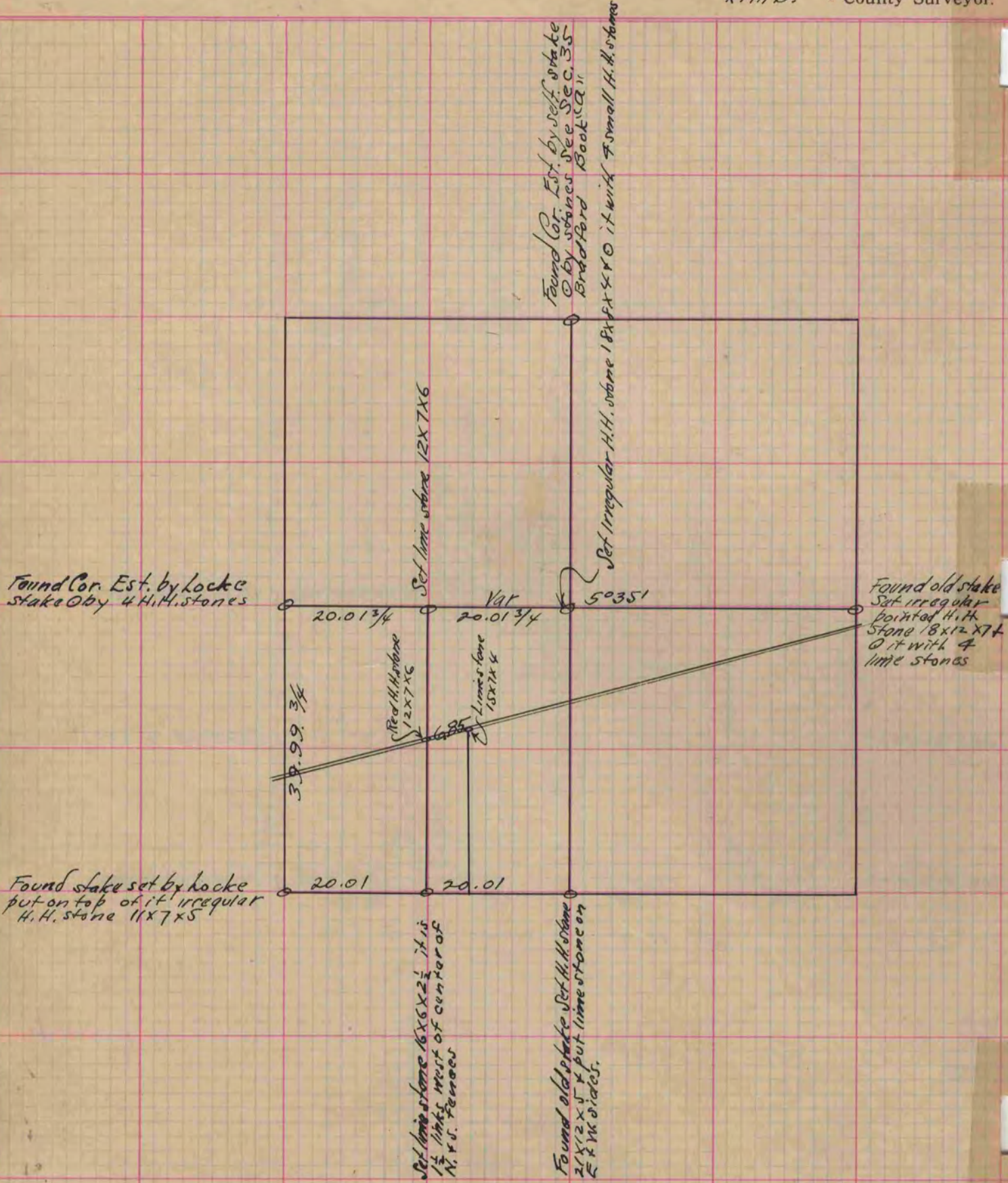
PLAT AND RECORD

Of a Survey on Section 2 T 1 R 14 E. of the 4 P. M. in Clinton Township
Rock County, Wisconsin, made October the 12 1871

I hereby certify that the following is a correct record of said survey as made by me.

COUNTY BUILDING
CITY OF JANESVILLE

(Signed) Edward Ruger
R. H. B. County Surveyor.



Copied from Page 45 Vol. 2 Original County Surveyors Record