

MICROFILMED PLAT AND RECORD

W¹/₂, N.W.¹/₄
 Of a Survey on Section 26 T 4 R 13 E. of the 4 P. M. in Milton Township
 Rock County, Wisconsin, made June the 29th 1875

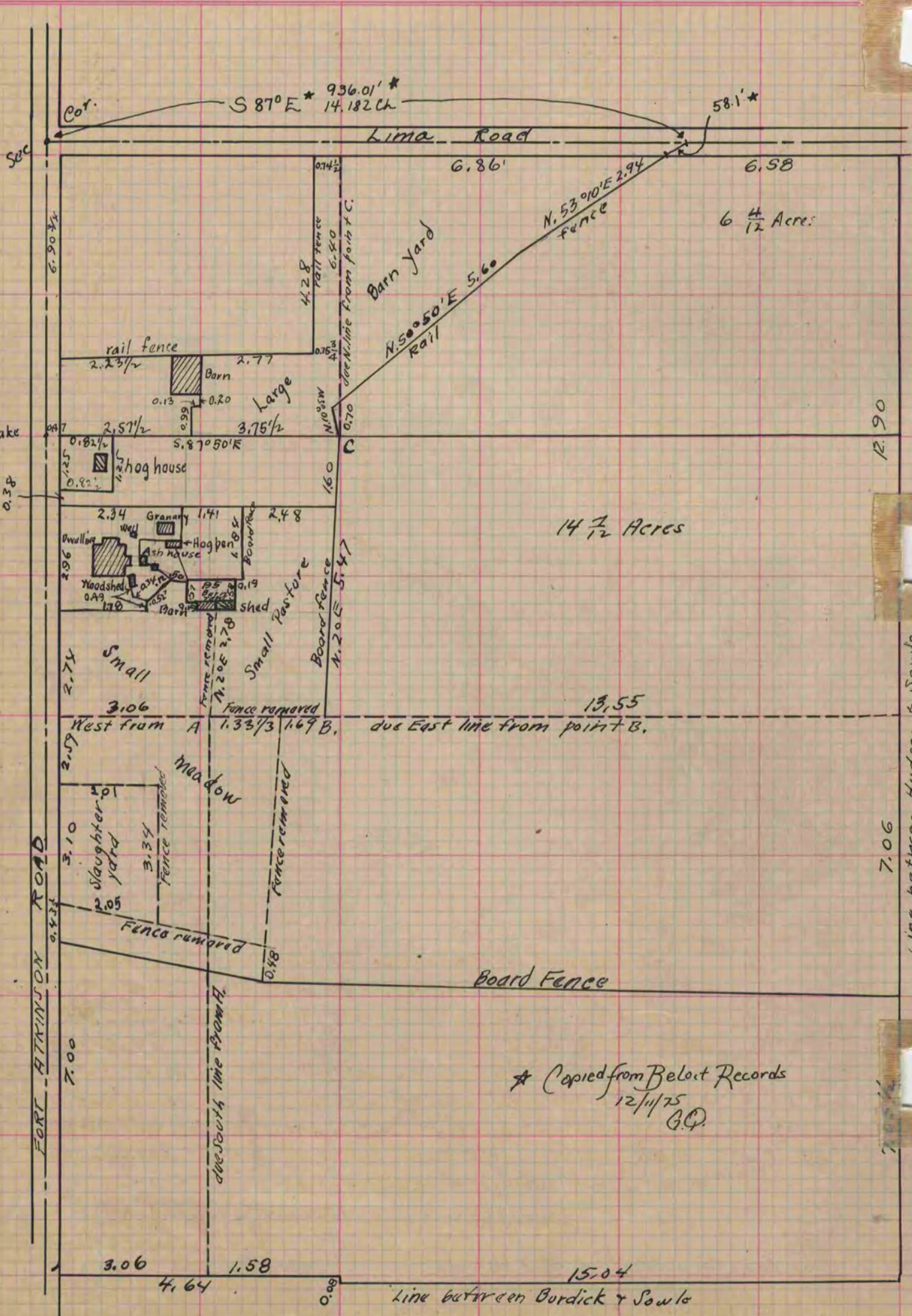
I hereby certify that the following is a correct record of said survey as made by me.

COUNTY BUILDING
 CITY OF JANESVILLE

(Signed) Edward Ruger
 R.H.D.

County Surveyor

Pertaining to the Estate of the late James Sowle showing the location of the buildings and fences as well as the location of fences standing at date of mill, but since removed. Also the due South line from point A due West line from point A, due East line from point B, due North line from point C. Distances given in chains & decimals of a chain Courses per True Meridian Var. of Needle 6° 17' E.



Copied from P. 50 Vol. County Surveyors Record