

PLAT AND RECORD

267
✓-1

MICROFILMED

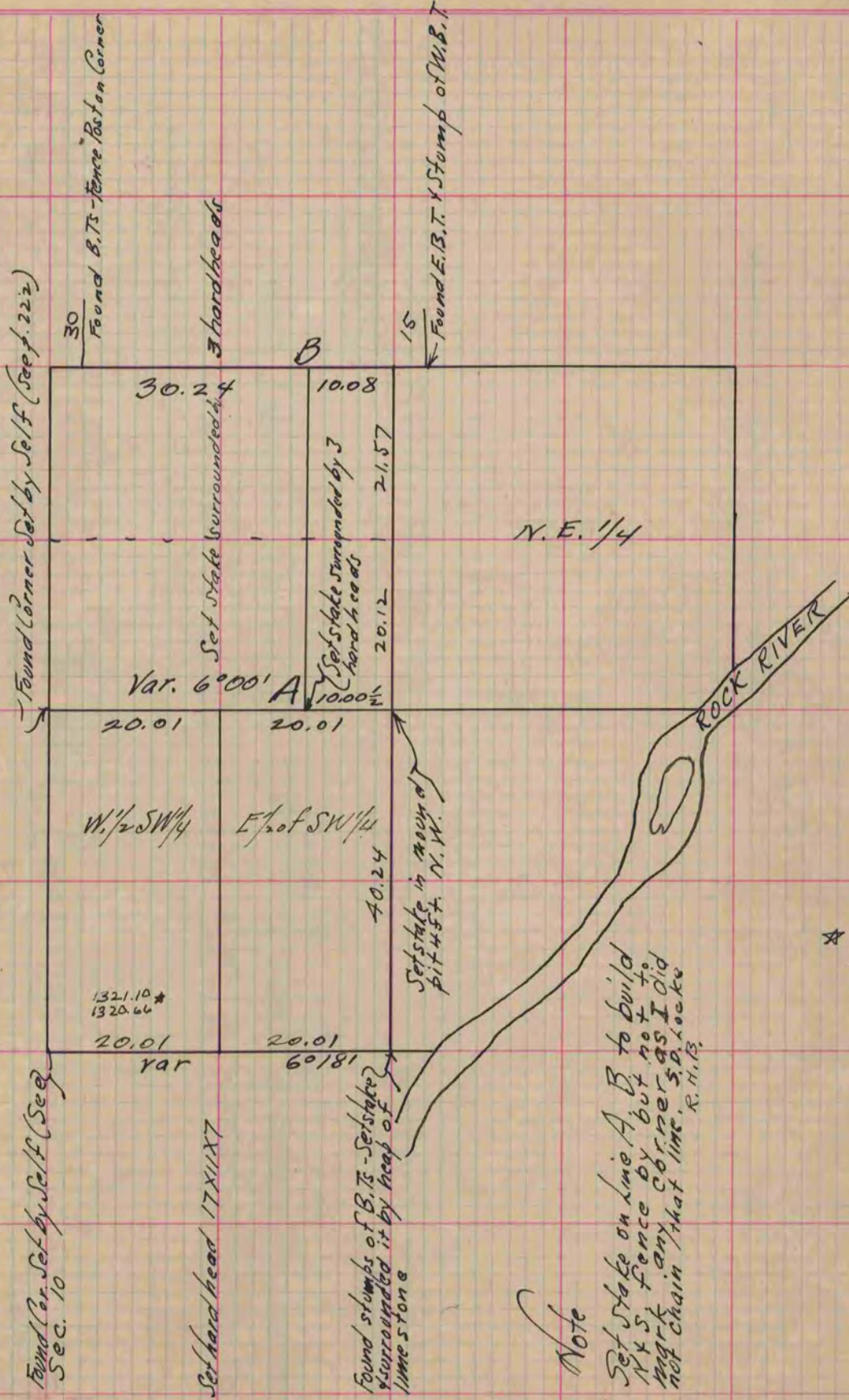
COUNTY BUILDING
CITY OF JANESVILLE

Of a Survey on Section 3 T 2 R 12 E. of the 4 P. M. in Rock Township

Rock County, Wisconsin, made July the 6th 1866

I hereby certify that the following is a correct record of said survey as made by me.

(Signed) S. D. Locke
R. H. B. County Surveyor.



* copied from Beloit records 12/9/75 G.G.

Copied from page 237 Vol. 1. Original County Surveyors Record