

PLAT AND RECORD

VOL. 6

Of a Survey on Section 33 T 1 R 10 E. of the 4 P. M. in Township
Rock County, Wisconsin, made JUNE the

I hereby certify that the following is a correct record of said survey made by me

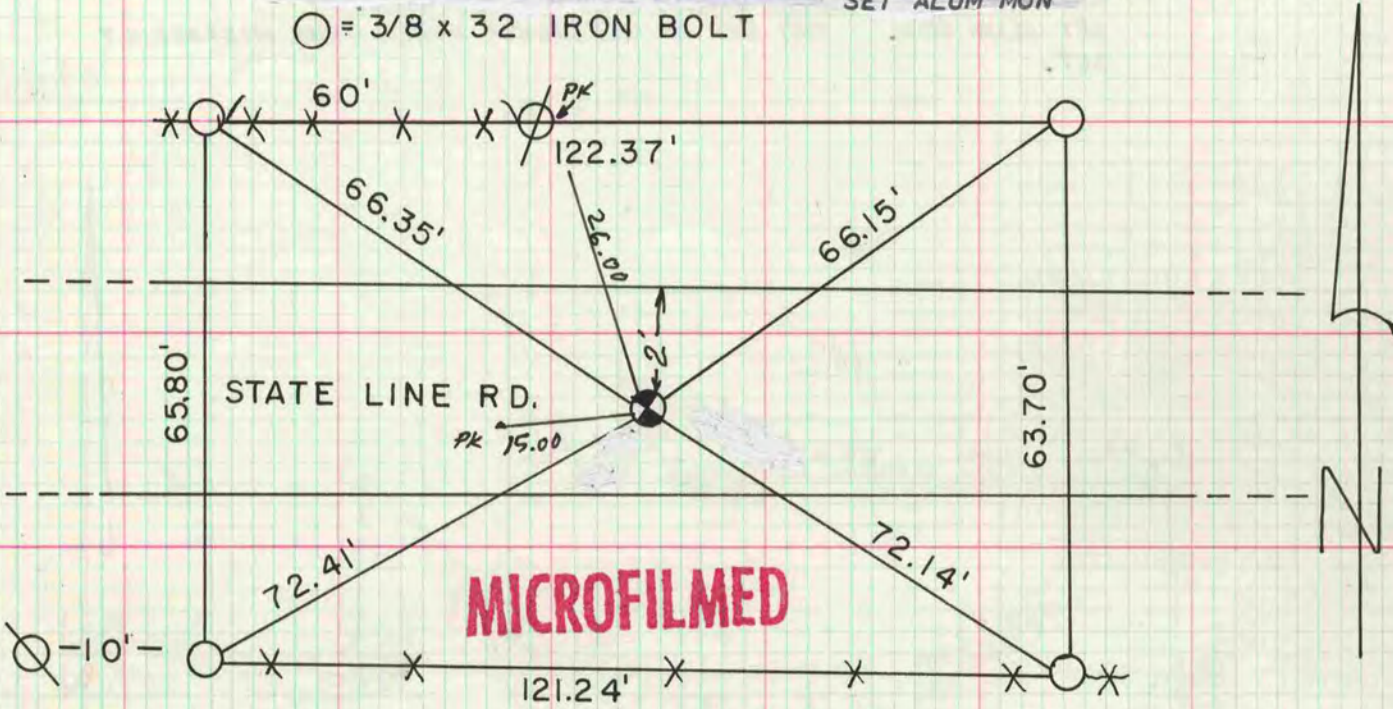
COUNTY BUILDING
CITY OF JANESVILLE



S 1/4 COR SEC 33 T1N R10E

FD SANDSTONE 24"X12"X7" 4'DEEP. LAYED IP HORIZONTALLY NEXT TO STONE.
SET ALUM MON

○ = 3/8 x 32 IRON BOLT



SE COR SEC 33 T1N R10E

FD. 1/2 x 24 IRON ROD, REPLACED
WITH 24" ALUM. MON. ON TOP OF CORRUGATED
METAL PIPE.

