

PLAT AND RECORD

Of a Survey on Section 5, 9 T 4 R 13 E. of the 4 P. M. in MILTON
Rock County, Wisconsin, made MAY the 7

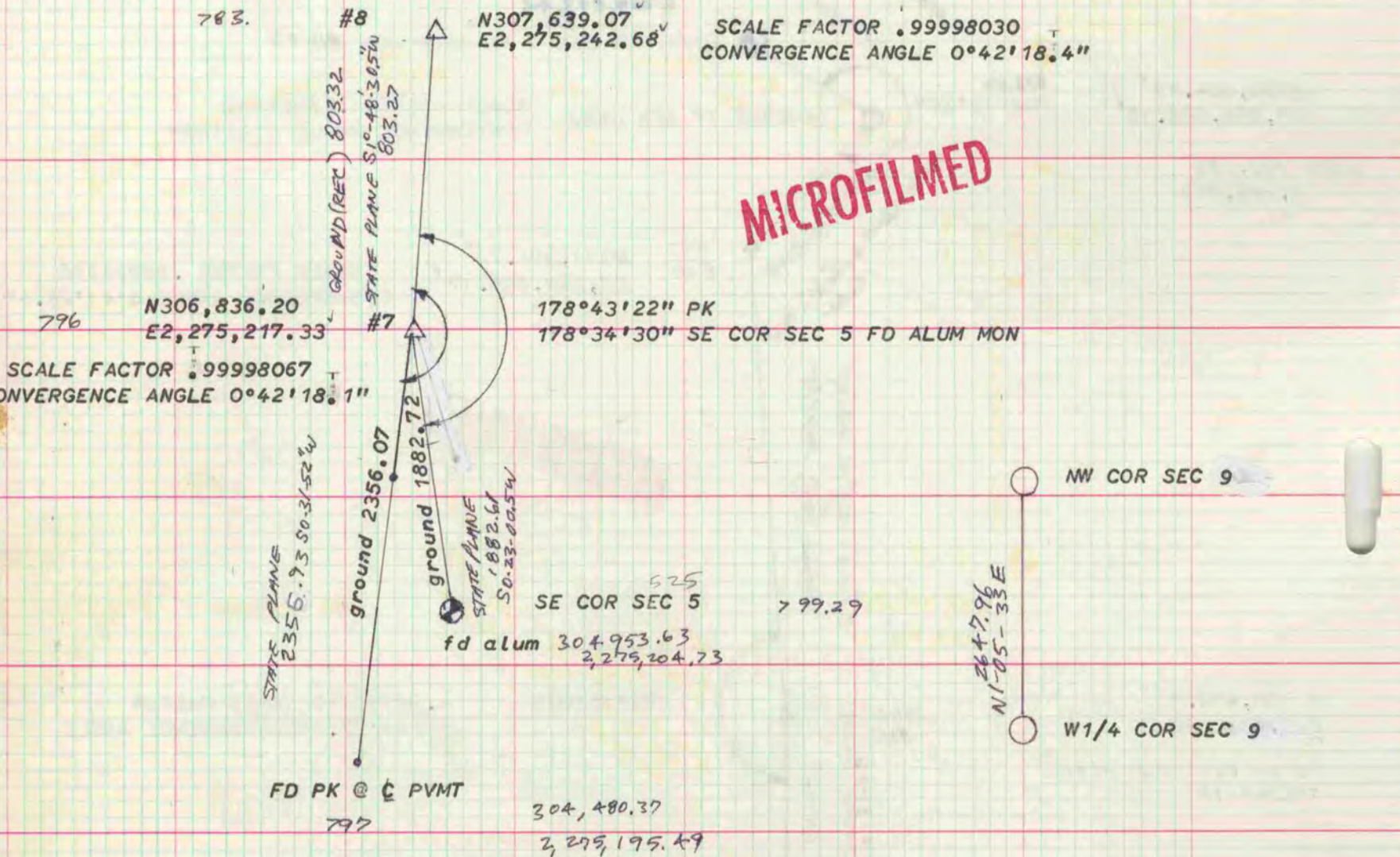
I hereby certify that the following is a correct record of said survey as made by me
COUNTY BUILDING
CITY OF JANESVILLE

Donald Barnes



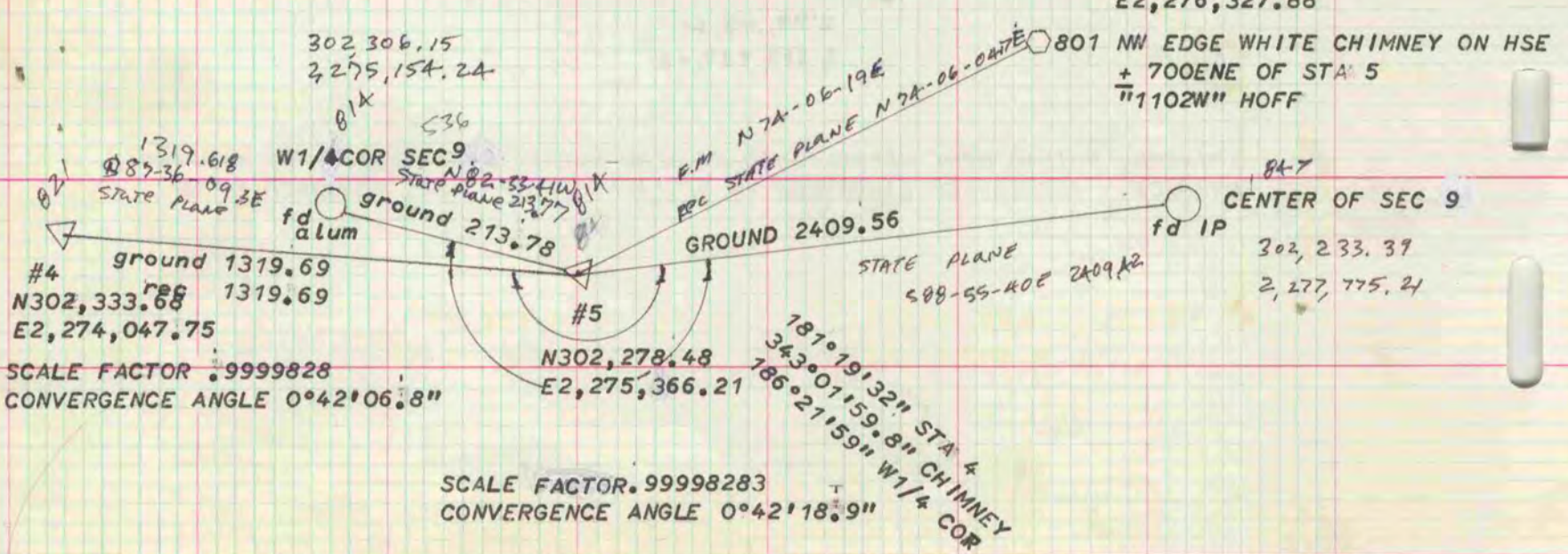
SCALE FACTOR .99998030
CONVERGENCE ANGLE 0°42'18.4"

MICROFILMED



TRAVERSE STATIONS WERE ESTABLISHED BY AERO-METRIC ENGINEERING FOR A MAPPING PROJECT. ANGLES AND DISTANCES TO SECTION CORNERS WERE MEASURED BY ME. ARBITRARY COORDINATES USED TO GENERATE AZIMUTH

N302,552.39
E2,276,327.88
801 NW EDGE WHITE CHIMNEY ON HSE
+ 700ENE OF STA 5
"1102W" HOFF



SCALE FACTOR .99998283
CONVERGENCE ANGLE 0°42'18.9"