

PLAT AND RECORD

Of a Survey on Section 18 T 4 R 14 E. of the 4 P. M. in TAMA Township
Rock County, Wisconsin, made DEC. the 1980

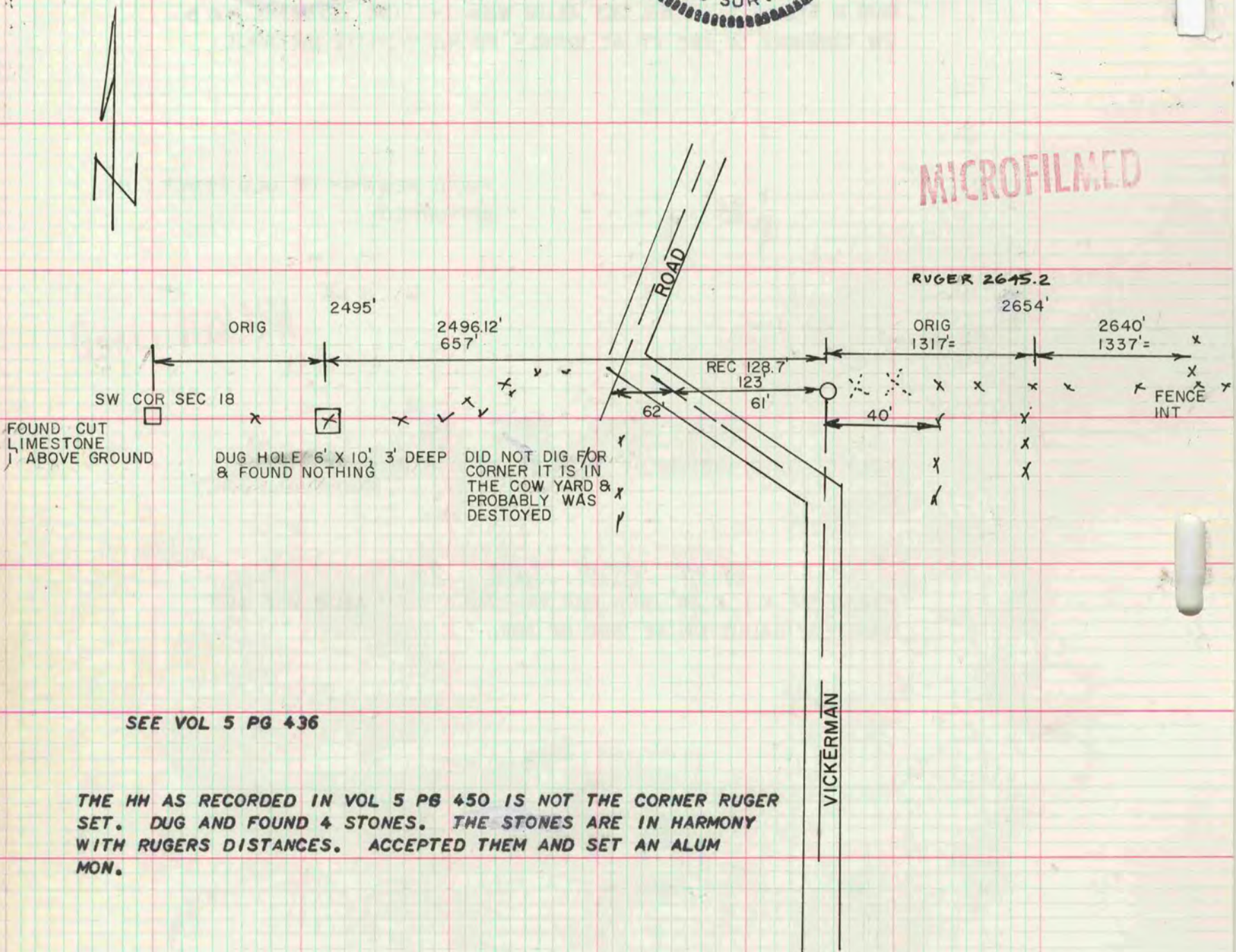
I hereby certify that the following is a correct record of said survey as made by me.

COUNTY BUILDING
CITY OF JAMESVILLE



S 1/4 COR SEC 18

MICROFILMED



SEE VOL 5 PG 436

THE HM AS RECORDED IN VOL 5 PG 450 IS NOT THE CORNER RUGER SET. DUG AND FOUND 4 STONES. THE STONES ARE IN HARMONY WITH RUGERS DISTANCES. ACCEPTED THEM AND SET AN ALUM MON.