

PLAT AND RECORD

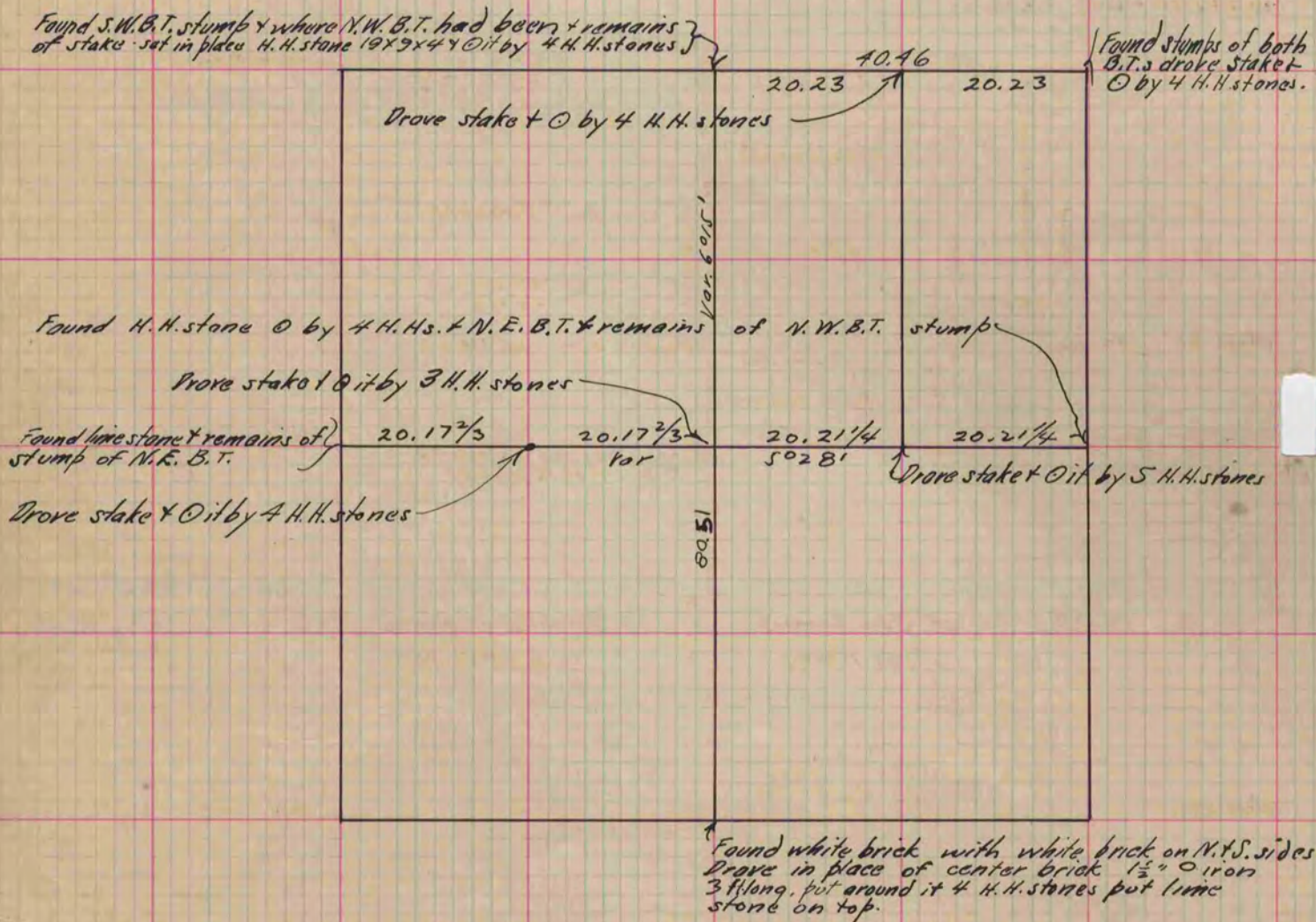
Of a Survey on Section 8 T 3 R 12 E. of the 4 P. M. in Janesville Township

Rock County, Wisconsin, made April the 21 1884

COUNTY BUILDING
CITY OF JANESVILLE

I hereby certify that the following is a correct record of said survey as made by me.

(Signed) Edward Ruger
R. H. B. County Surveyor.



Copied from P. 310 Vol. 2 County Surveyors Record.