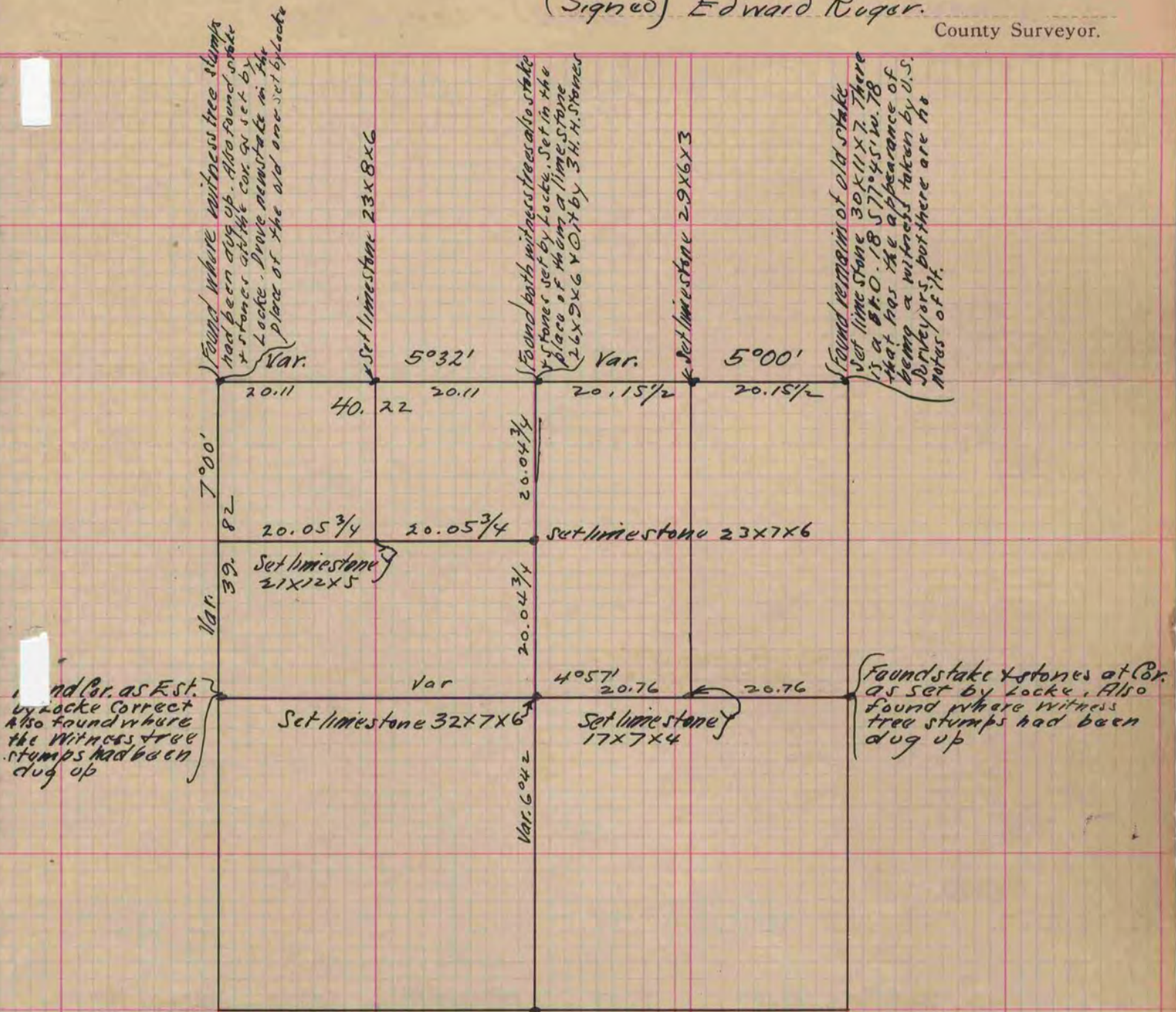


Of a Survey on Section 8 T 2 R 10 E. of the 4 P. M. in Spring Valley Township  
Rock County, Wisconsin, made April 30 & May the 1 1879

I hereby certify that the following is a correct record of said survey as made by me.

(Signed) Edward Ruger.

County Surveyor.



Found stake & stones at Cor. as set by Locke. Also found where witness tree stumps had been dug up. Cor. at the intersection of fences.

Locke & Church had subdivided this section under the state law, fixing the center equi-distant from the opposite corresponding 1/4 Cor.'s. I established the centre at the point of intersection of right lines between the corresponding quarters corners.

(Signed) Edward Ruger  
R. H. B.  
County Surveyor.

Copied From Page 216 Vol. 2 Original County Surveyors Record