

MICROFILMED

PLAT AND RECORD

315
V-2

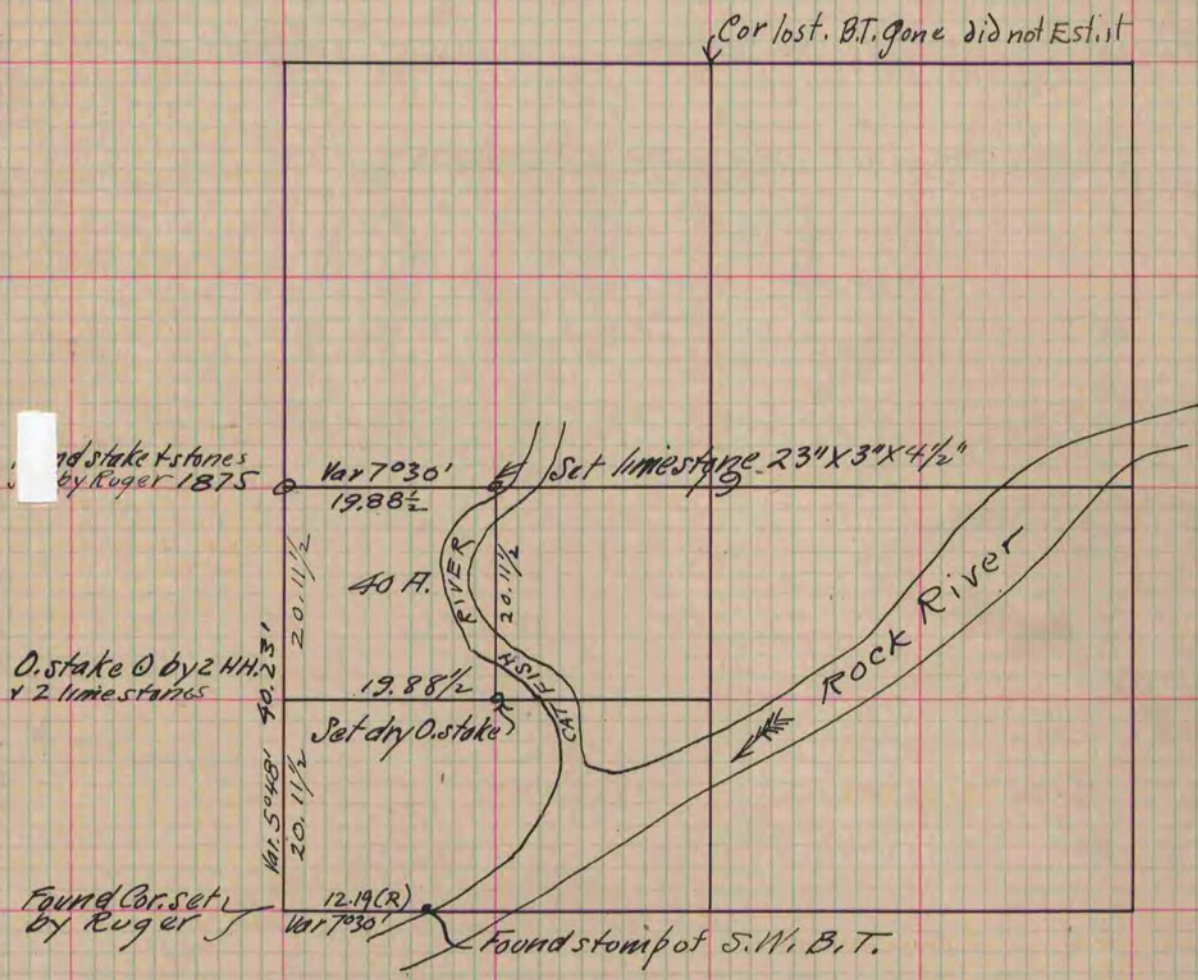
COUNTY BUILDING
CITY OF JANESVILLE

Of a Survey on Section 19 T 4 R 12 E. of the 4 P. M. in Fulton Township

Rock County, Wisconsin, made October the 20 & 21st 1880

I hereby certify that the following is a correct record of said survey as made by me.

(Signed) R. K. Lee Deputy
R. H. B. County Surveyor.



Copied from P. 261 Vol. 2 County Surveyors Record.