

MICROFILMED

PLAT AND RECORD

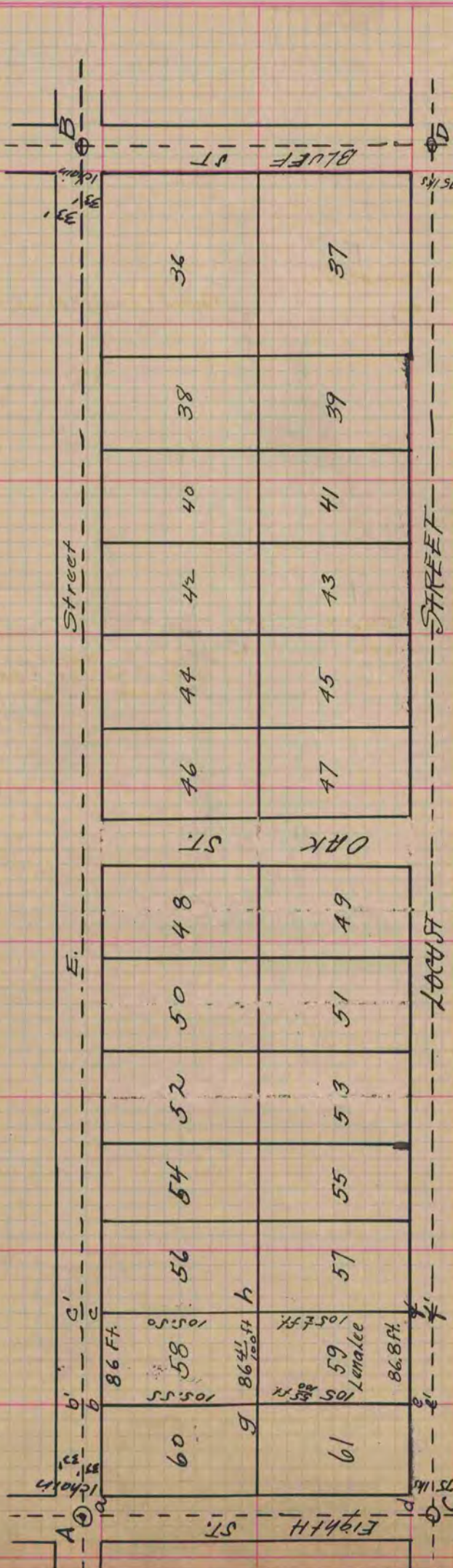
305
V-2

Of a Survey on Section 35 T 1 R 12 E. of the 4 P. M. in BELOIT Township
Rock County, Wisconsin, made the 19

I hereby certify that the following is a correct record of said survey as made by me.

COUNTY BUILDING
CITY OF JANESVILLE
County Surveyor.

Below is a record & plat of a Survey made by me June 16th 1880 of Lot N^o 59 in Tenney's Addn to the City of Beloit. At the N.W. Cor. of said lot I drove a piece of $7\frac{1}{16}$ " iron 30" long and 4" below surface placed on top of iron a limestone $8 \times 5\frac{1}{2} \times 4\frac{3}{4}$ ". At N.E. Cor. drove piece of $7\frac{1}{16}$ " iron 18 $\frac{1}{2}$ " long with Δ limestone 6" thick and $6 \times 6\frac{1}{2} \times 8\frac{1}{2}$ " on top upon it. At S.E. Cor. drove $7\frac{1}{16}$ " iron $40\frac{1}{4}$ " long with limestone set at end at S. side of stone is $9 \times 5 \times 4$ ". At S.W. Cor. drove $7\frac{1}{16}$ " iron $28\frac{1}{2}$ " long with limestone $12 \times 6 \times 4\frac{1}{2}$ on top upon it.
Signed R. K. Lee Dep't. G. Surveyor.
R.H.B.



Found at H, B, C, & D. stone Mon's est. at the intersect. center lines of the streets. I measure from H. to B. ~~making~~ an adjusted steel chain 100 ft. in length, & find distance to be 1293.7 ft. the recorded distance being 1290.7 ft. making an excess on this line of 2.9 ft. I measure from C to D. and find the distance to be 1301.5 ft. the recorded distance being 1287. ft. showing an excess on this line of 14.5 ft. I measure A. C. & find recorded distance to be correct being 268.25 ft. I next find point marked "a" in E. of 8th St. & 33 ft. S. from H. also found b' in line A. B. at distance of 119.07 ft. from Mon. at H. & make C. in same line 86 ft. distant from b'. I next find e' in line C. D. & make distance C e' = 116.8 ft. I then fix point f' in same line 86.8 ft. from e'. From the points b' & C' the distance to b & C is 33 ft. & from the point e' & f' the distance to e & f is 24.75 ft. g is the point est. by my survey as the N.W. Cor. of lot 59 & is equidistant from b & e being 105.53 ft. from each. h is the point est. by my survey as the N.E. Cor. of lot 59 & is equidistant from c & f being 105.5 ft. from each. e & f are the S.W. & S.E. cor's. respectively of Lot 59

Copied from page 255 Vol. 1.2 County Surveyors Record.