

# PLAT AND RECORD

521

VOL. 5

Of a Survey on Section 26 T 2 R 12 E. of the 4 P. M. in ROCK Township

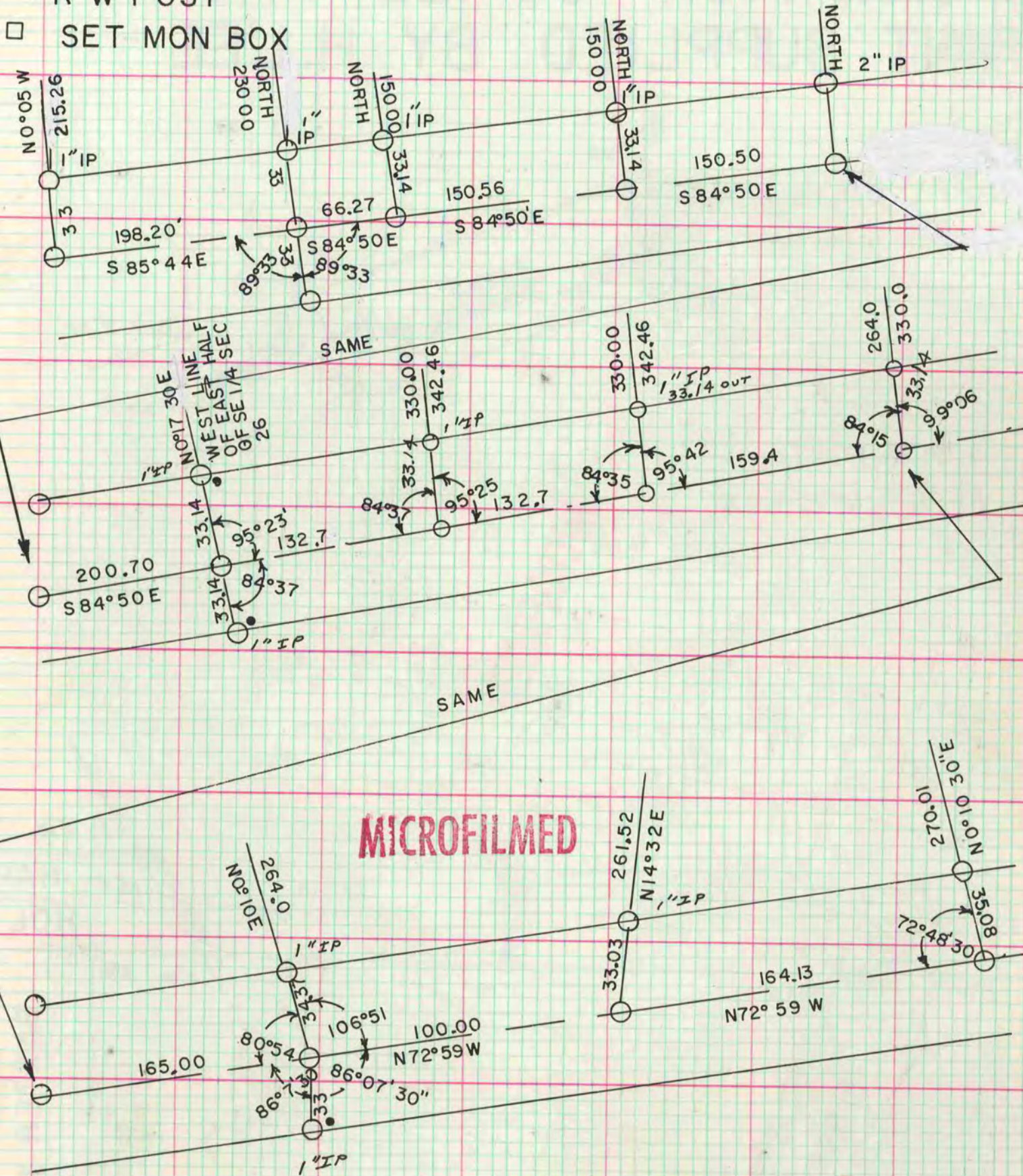
Rock County, Wisconsin, made AUG the 29 19 67

I hereby certify that the following is a correct record of said survey as made by me

COUNTY BUILDING  
CITY OF JANESVILLE

County Surveyor.

• R W POST  
□ SET MON BOX



INFORMATION COPIED FROM  
PRINTS FROM H. LEE