

MICROFILMED

PLAT AND RECORD

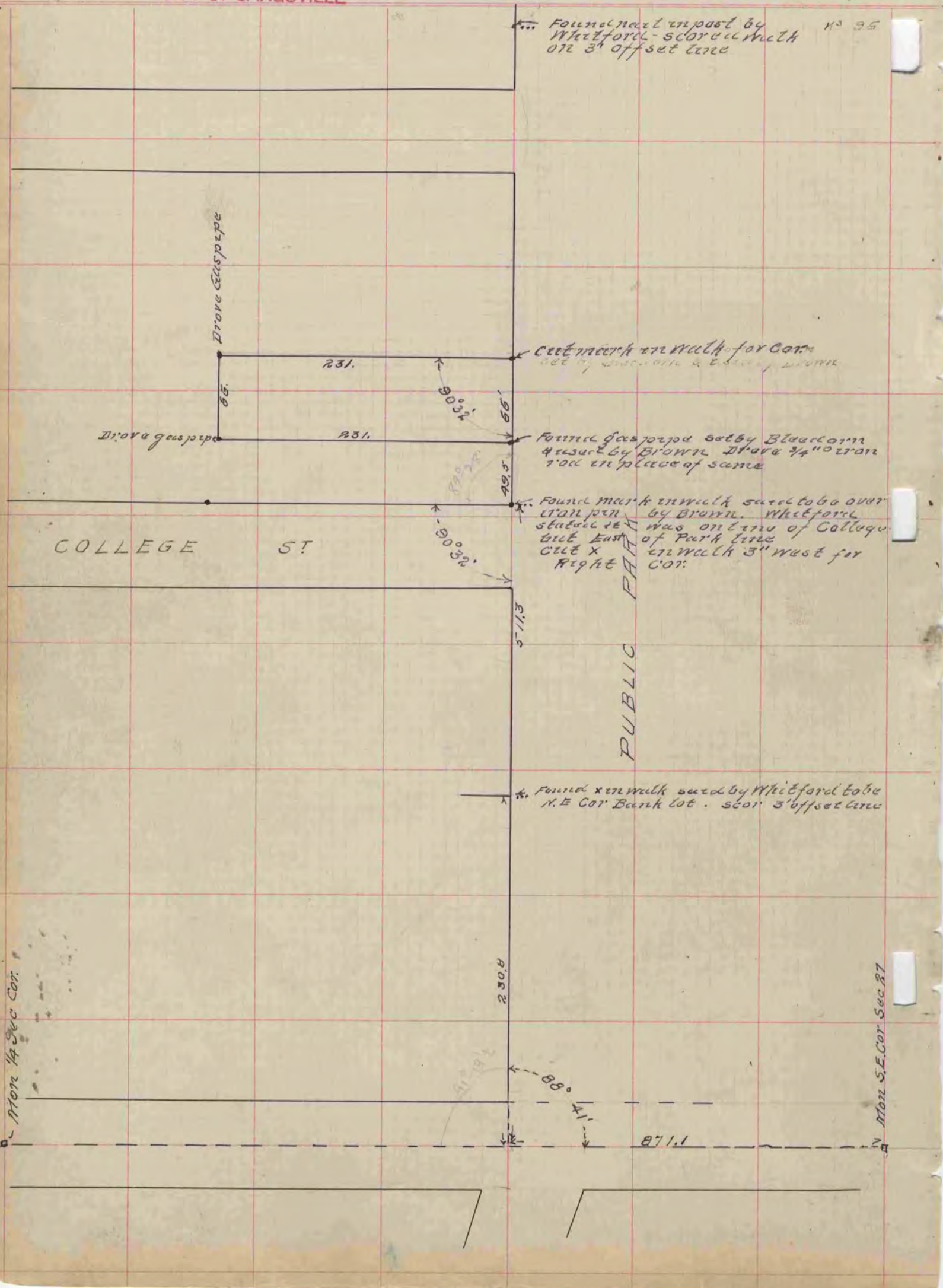
Of a Survey on Section 27 T 4 R 13 E. of the 4 P. M. in Milton Township

Rock County, Wisconsin, made September the 25th 1907

I hereby certify that the following is a correct record of said survey as made by me.

COUNTY BUILDING
CITY OF JANESVILLE

County Surveyor.



Mon 14 Sec Cor

Mon S.E. Cor Sec 27