

PLAT AND RECORD

MICROFILMED

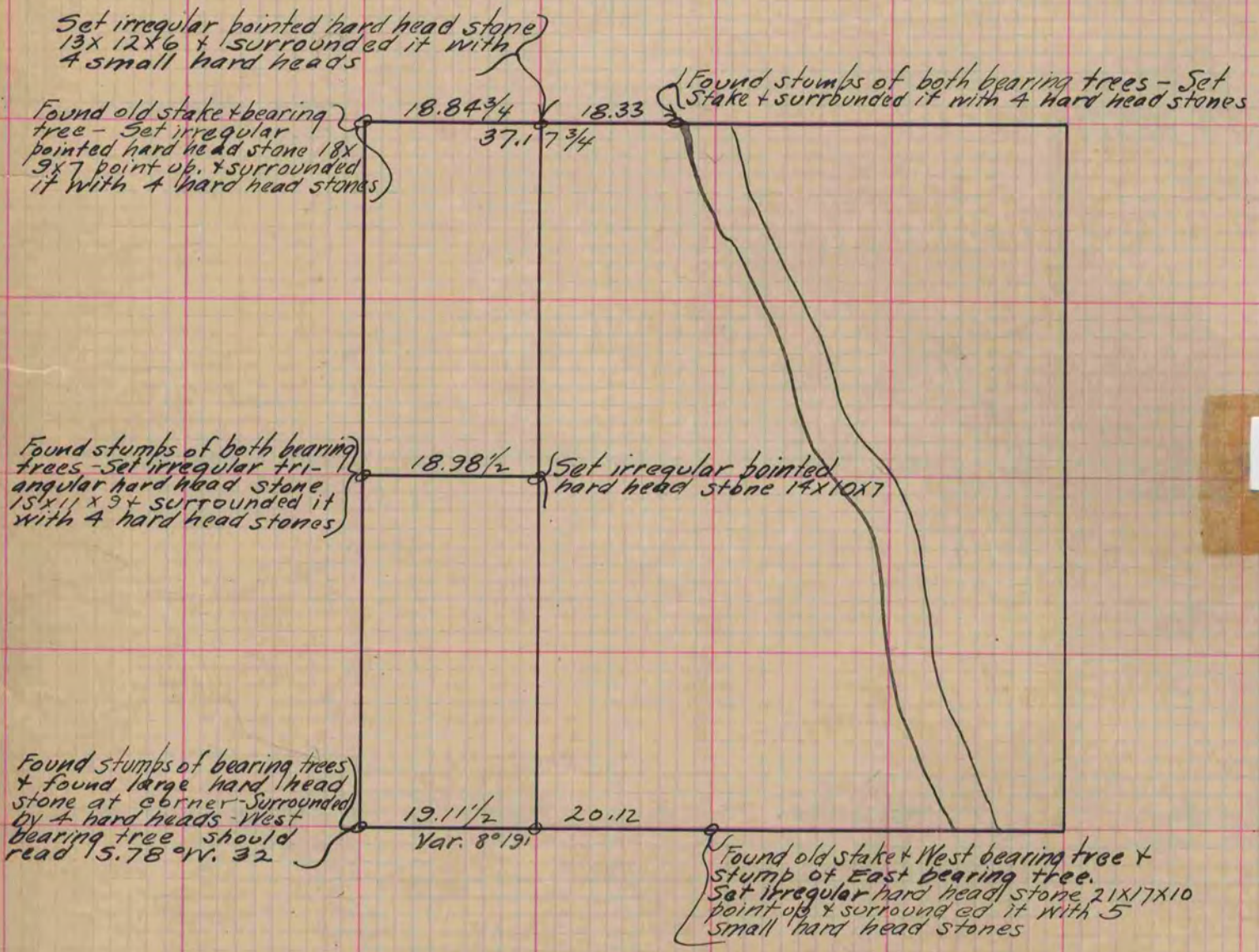
Of a Survey on Section 31 T A R 12 E. of the 4 P. M. in Fulton Township

Rock County, Wisconsin, made July the 2nd 1870

I hereby certify that the following is a correct record of said survey as made by me.

COUNTY BUILDING
CITY OF JANESVILLE

(Signed) Edward Roger Deputy
R.H.B. County Surveyor



Copied from page 24 Vol. 2 Original County Surveyors Record