

# PLAT AND RECORD

**MICROFILMED**

Of a Survey on Sections 22 & 23 T 2 R 12 E. of the 4 P. M. in Rock Township

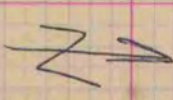
Rock County, Wisconsin, made December the 6 1881

I hereby certify that the following is a correct record of said survey as made by me.

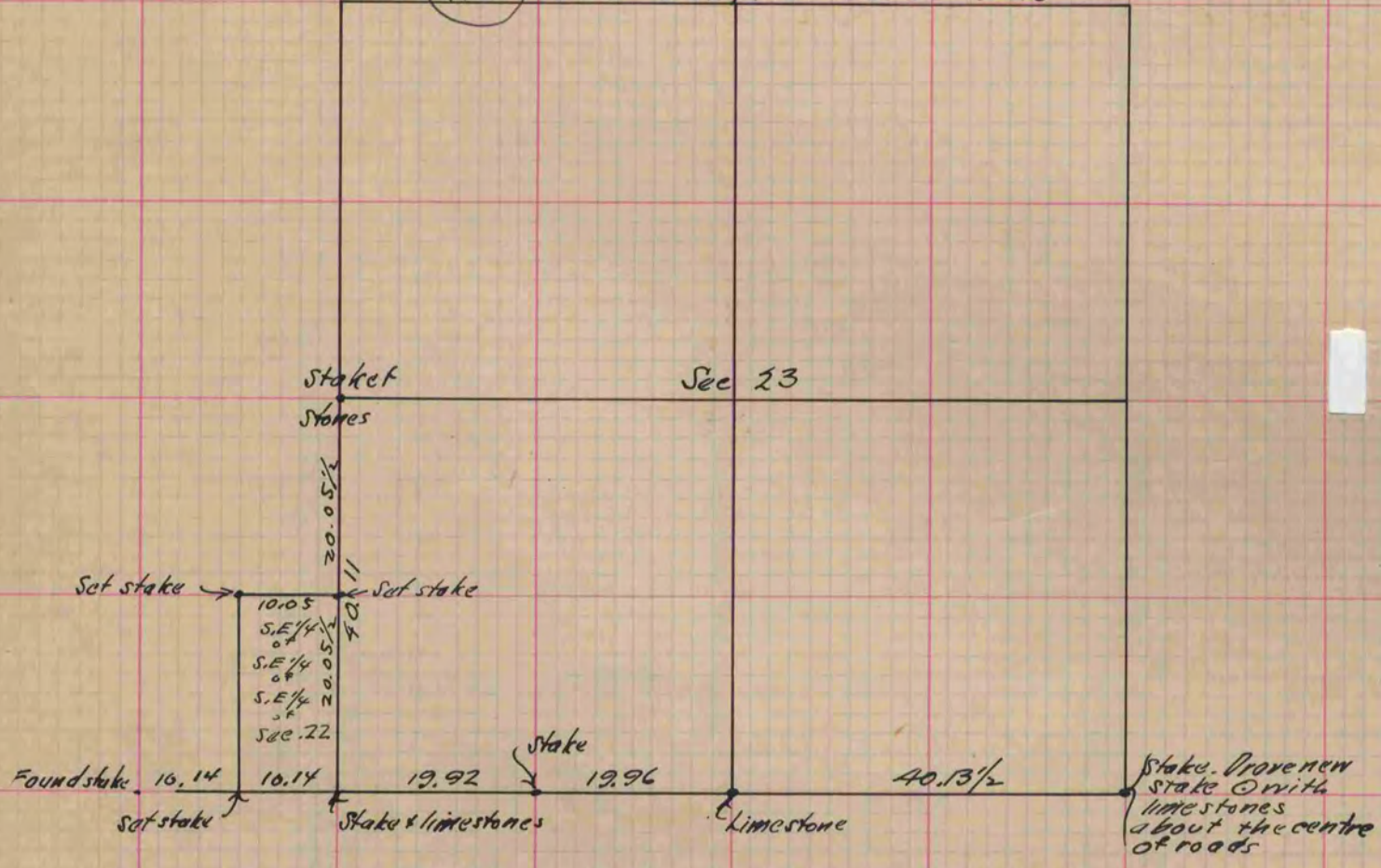
COUNTY BUILDING  
CITY OF JANESVILLE

(Signed) J. A. Holmes  
R. H. B.

County Surveyor.


 PROBABLY NORTH  
 "ROADS" AT SE CORNER  
 BASED ON SEYA OF SEC 22  
 PAR MARCH 23 1888

West line of S.W. 1/4 of Sec. 23 Rock



Copied from P. 278 Vol. 2. County Surveyors Record.