

MICROFILMED

# PLAT AND RECORD

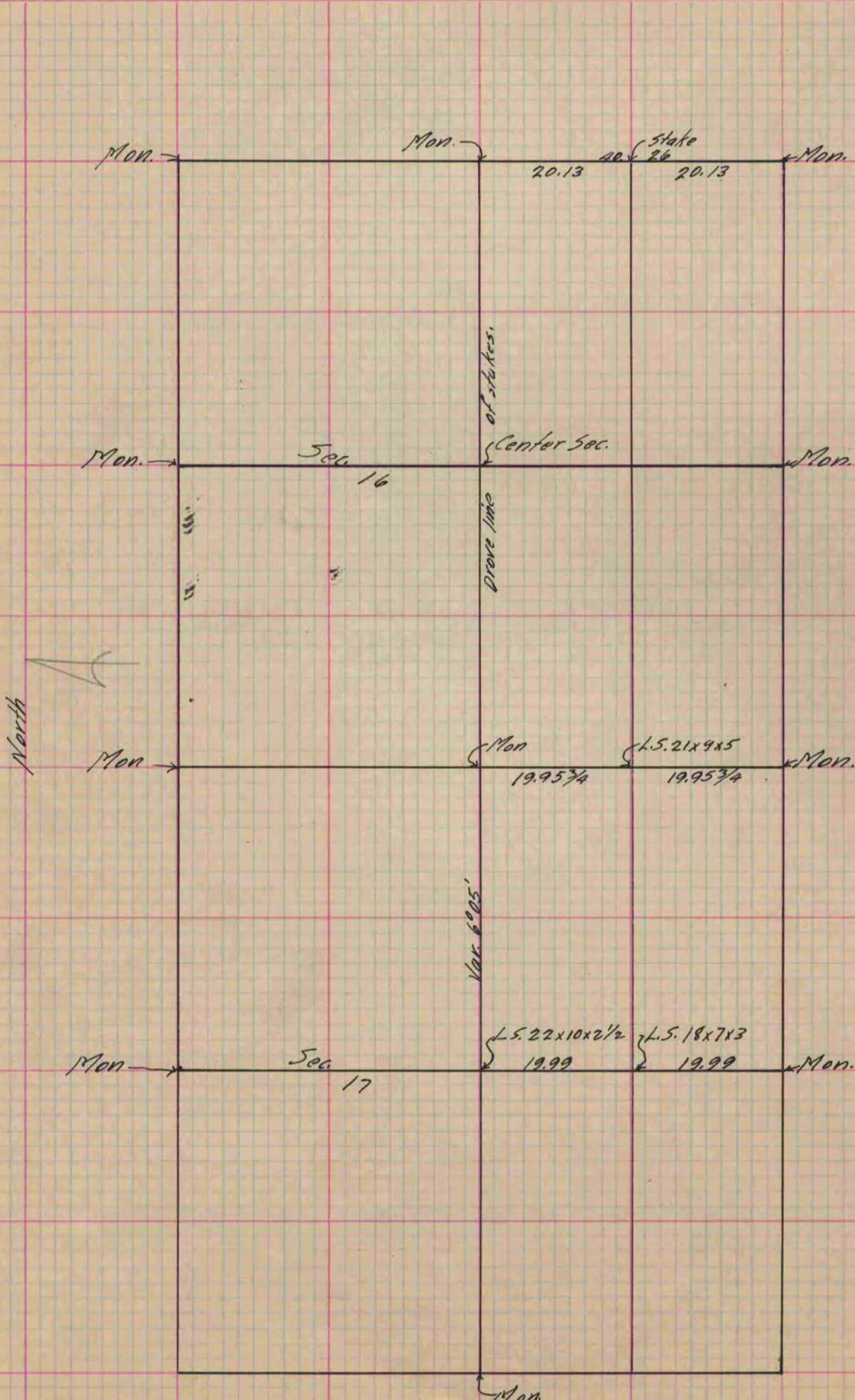
Of a Survey on Section 16 & 17 T 4 R 10 E. of the 4 P. M. in Union Township

Rock County, Wisconsin, made April the 21 & 22 1890

I hereby certify that the following is a correct record of said survey as made by me.

COUNTY BUILDING  
CITY OF JANESVILLE

(Signed) O. G. Bloodorn Dep.  
R. H. B. County Surveyor.



Copied from P. 346 Vol. 2 County Surveyor's Record.