

MICROFILMED

PLAT AND RECORD

Of a Survey on Section 8 T 1 R 10 E. of the 4 P. M. in Avon Township

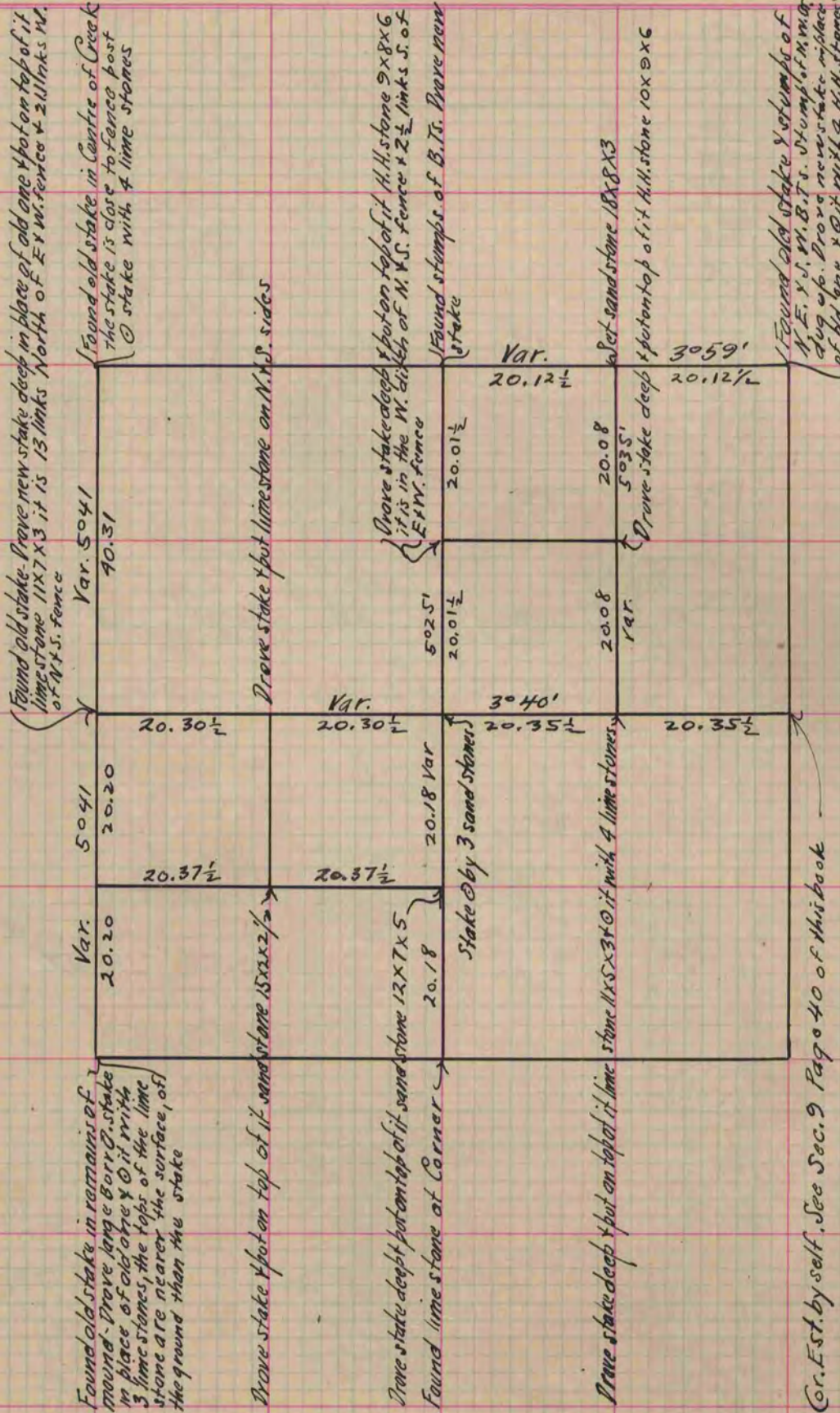
Rock County, Wisconsin, made June the 23 & 24 1874

I hereby certify that the following is a correct record of said survey as made by me.

COUNTY BUILDING
CITY OF JANESVILLE

(Signed) Edward Ruger
R.H.B.

County Surveyor.



Copied from Page 101 Volume 2 Original County Surveyors Record.