

PLAT AND RECORD

COUNTY BUILDING
CITY OF JANESVILLE

Of a Survey on Section 23 T 2 R 13 E. of the 4 P. M. in LA PRAIRIE Township

Rock County, Wisconsin, made JULY the 30th 1965

I hereby certify that the following is a correct record of said survey as made by me.

RMB
County Surveyor.

County Surveyor.

MICROFILMED

See page 215

See page 108

VAN ALLEN ROAD

Ruger 2648.42'
(2653.78" H.C.)

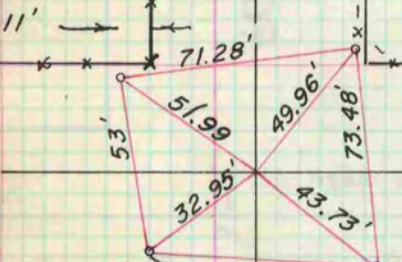
ROAD

H.C.
G.H.
D.L.

Found cut stone monu.
3' deep at W. 1/4 cor.

MAPLE 23 LANE

MILTON-SHOPIERE



Ref. points are 1" pipe

R.R. spike in Power Pole