

PLAT AND RECORD

COUNTY BUILDING
CITY OF JANESVILLE

Of a Survey on Section 17-18 T 4N, R 13 E. of the 4 P. M. in MILTON Township

Rock County, Wisconsin, made 2nd. the MAY 1962

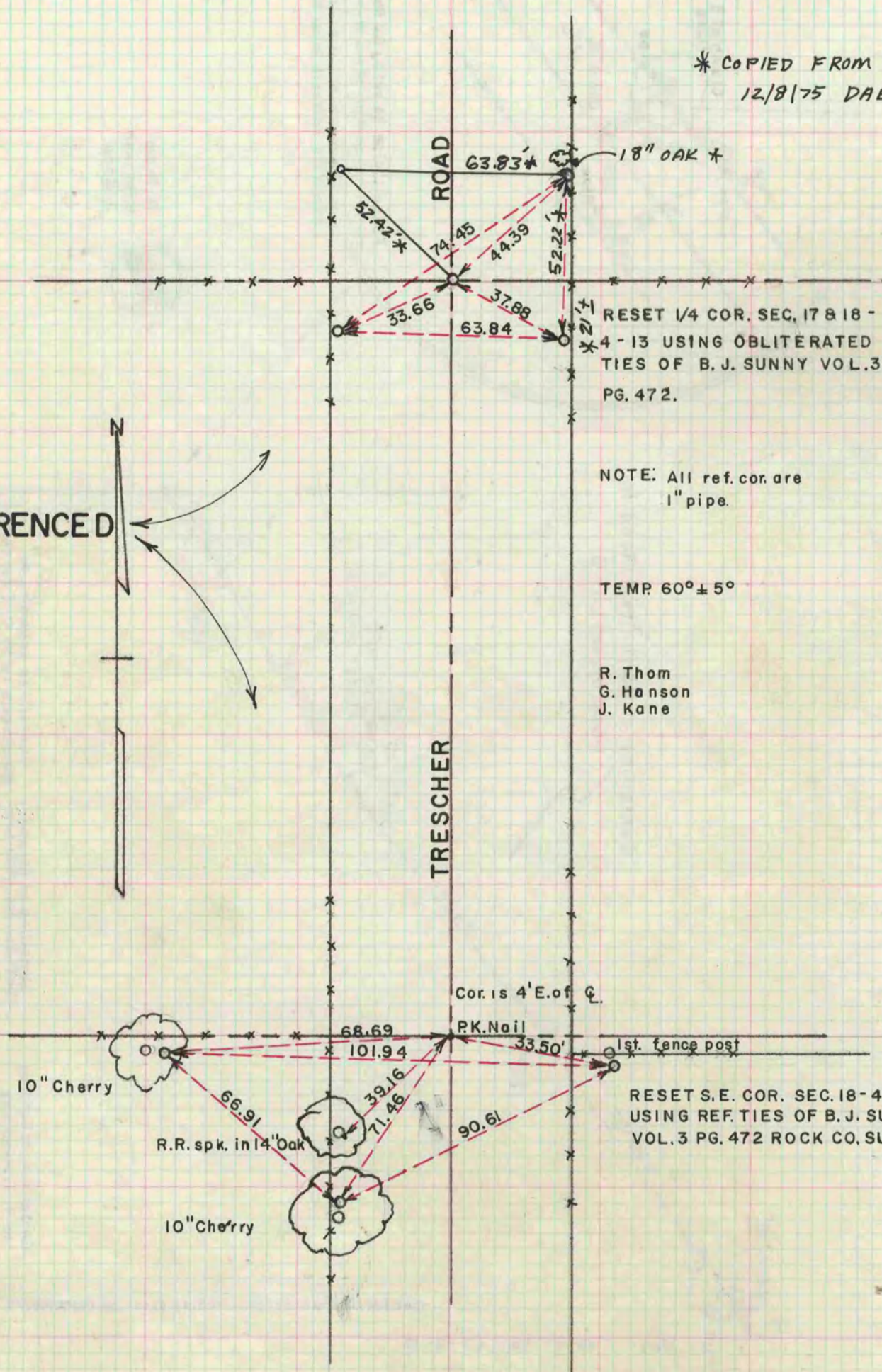
MICROFILMED

I hereby certify that the following is a correct record of said survey as made by me.

R. W. Hanson

County Surveyor.

* COPIED FROM BELOIT REC
12/8/75 DAB



RESET 1/4 COR. SEC. 17 & 18 -
4 - 13 USING OBLITERATED
TIES OF B. J. SUNNY VOL. 3
PG. 472.

NOTE: All ref. cor. are
1" pipe.

TEMP. 60° ± 5°

R. Thom
G. Hanson
J. Kane

RESET S.E. COR. SEC. 18-4-13
USING REF. TIES OF B. J. SUNNY
VOL. 3 PG. 472 ROCK CO. SUR. REC.

RE-REFERENCED
PAGE 418,
VOL. 4

