

PLAT AND RECORD

MICROFILMED

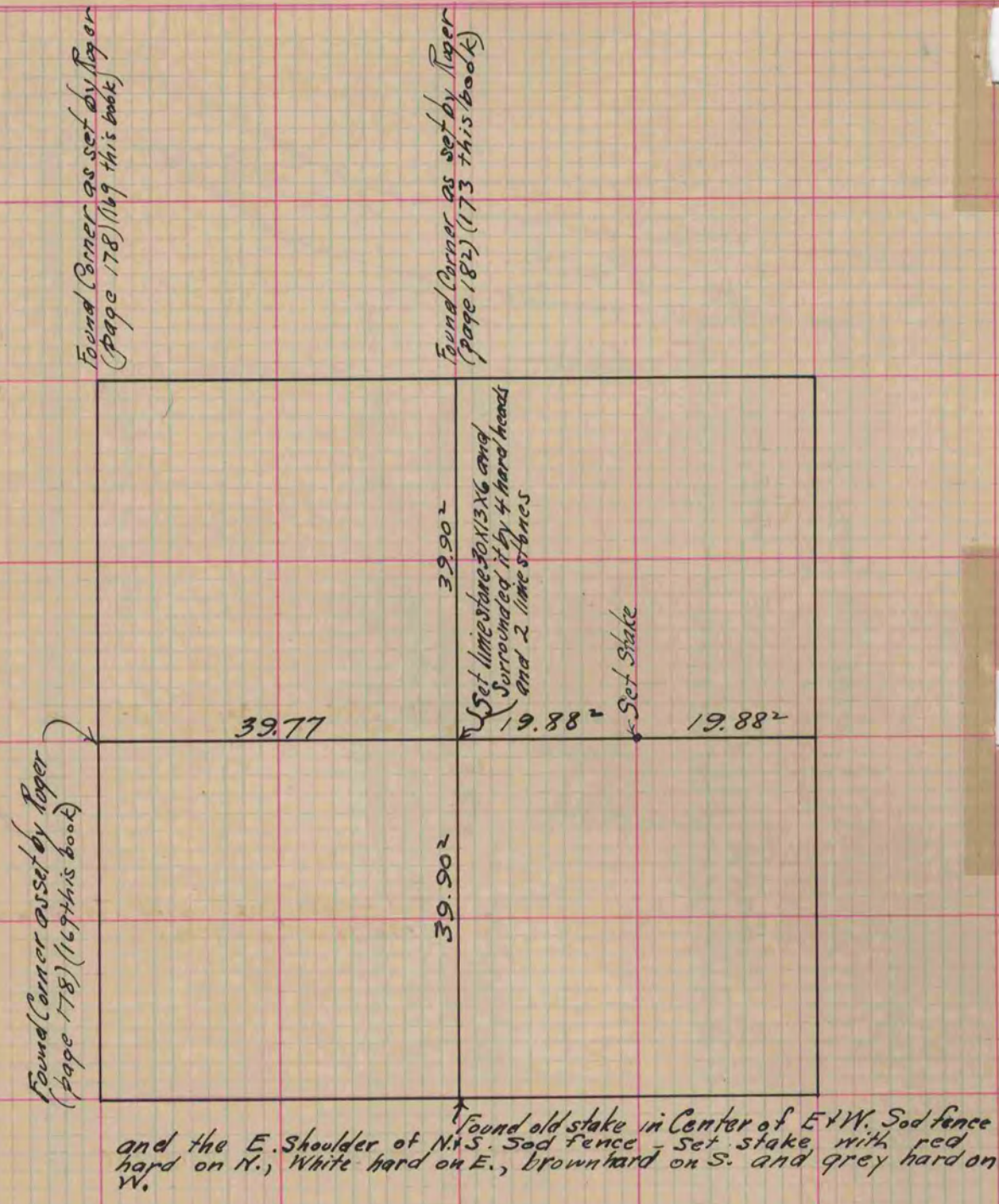
Of a Survey on Section 29 T 3 R 14 E. of the 4 P. M. in Johnstown Township
Rock County, Wisconsin, made October the 13 1865

I hereby certify that the following is a correct record of said survey as made by me.

COUNTY BUILDING
CITY OF JANESVILLE

(Signed) S. D. Locke
R.H.B.

County Surveyor.



Copied from Page 224 Vol. 1. Original County Surveyors Record.