

V-2
MICROFILMED

PLAT AND RECORD

Of a Survey on Section 6 T 1 R 12 E. of the 4 P. M. in Beloit Township

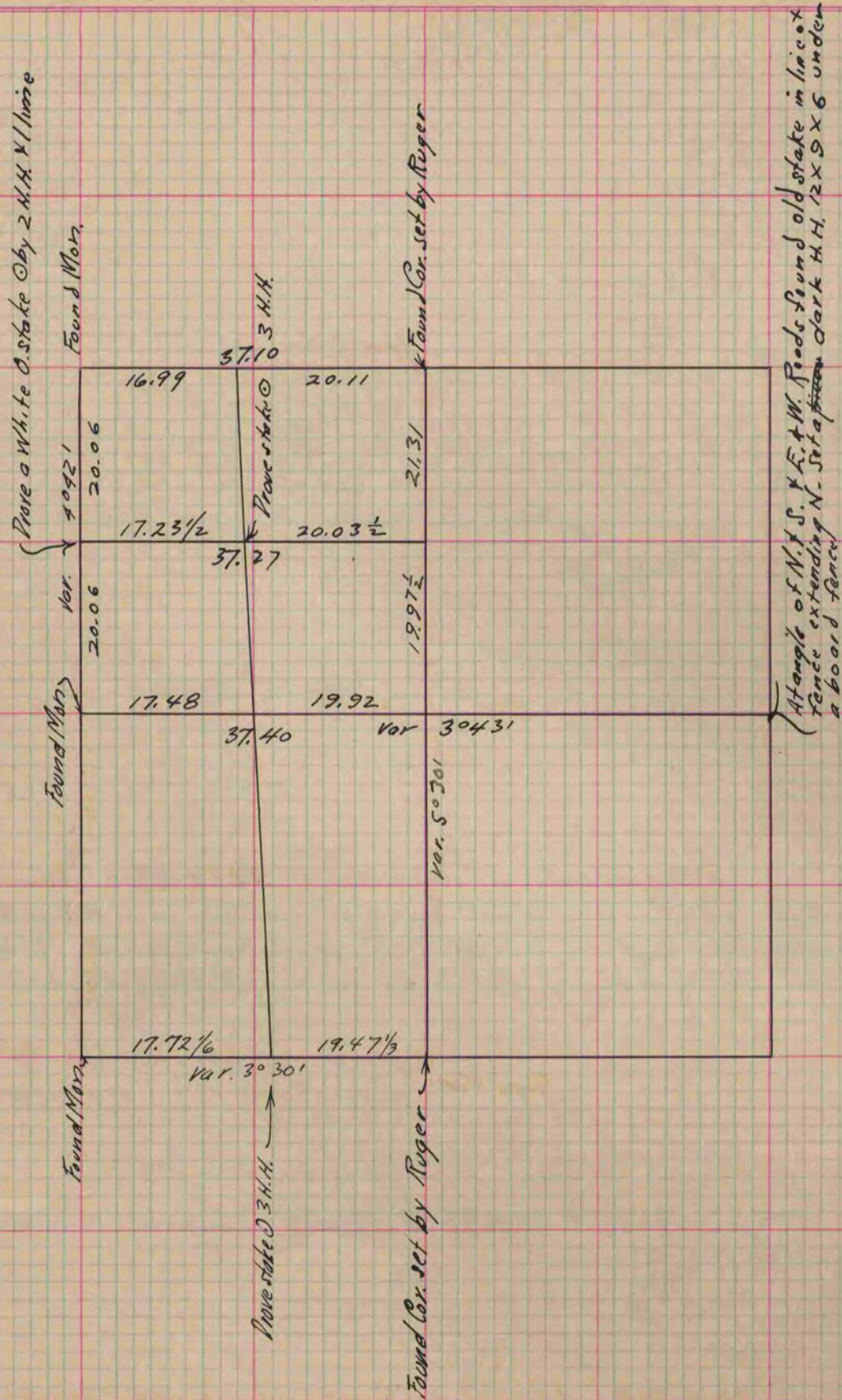
Rock County, Wisconsin, made September the 5th & 6th 1881

I hereby certify that the following is a correct record of said survey as made by me.

COUNTY BUILDING
CITY OF JANESVILLE

(Signed) R. K. Lee
R. H. B.

County Surveyor.



Copied from page 269 Vol. 2 County Surveyors Record.