

MICROFILMED

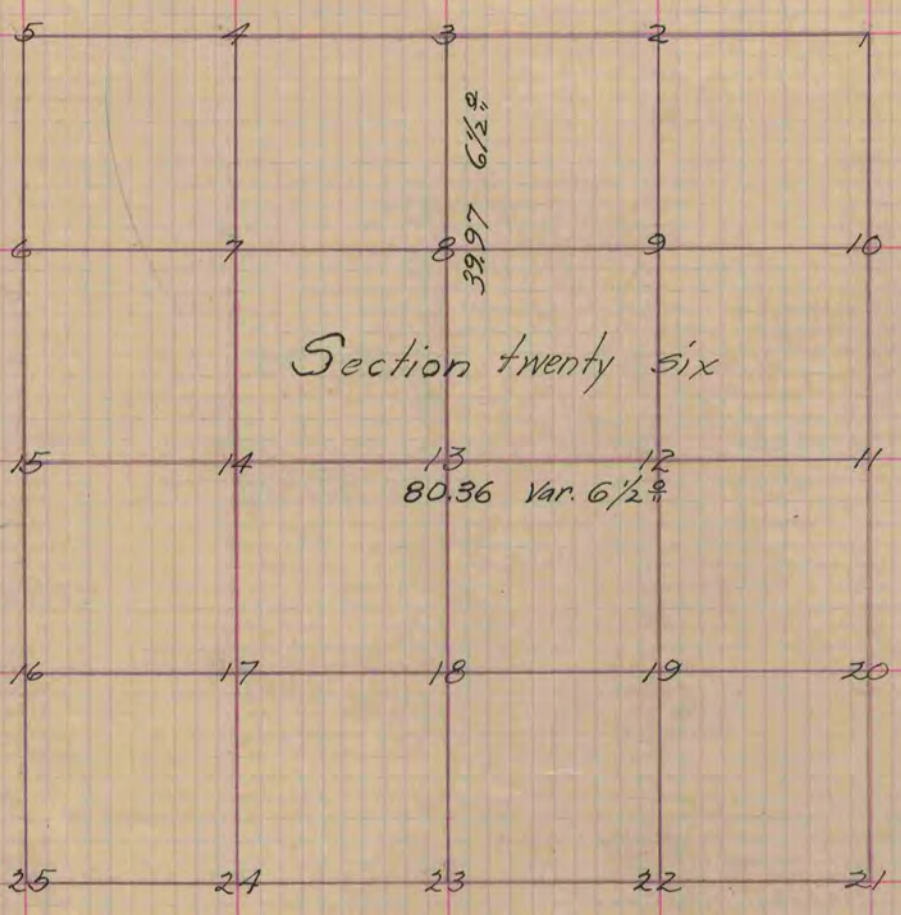
PLAT AND RECORD

Of a Survey on Section 26 T 1 R 10 E. of the 4 P. M. in Arion Township
Rock County, Wisconsin, made June the 8th 1854

I hereby certify that the following is a correct record of said survey as made by me.

COUNTY BUILDING
CITY OF JANESVILLE

(Signed) Peter McVean
R. H. B. County Surveyor.



- Figure 13 represents the centre of the Section 8 etc.
- Fig. 13 lime stone 16 inches long 8 wide and 4 thick the top even with the surface of the ground
- Fig. 9 Bl. O. 15 N 47 1/2 E. 96 Also Bl. O. 85. 39 W. 1.14 also a lime stone 14 inches long 8 wide and 4 thick the top buried in the ground even with the surface
- " 8 Burried a lime stone 12 inches long 8 wide and 5 thick even with surface
- " 14 Bl. O. 105. 86 1/2 E. 2.54 No other
- " 12 Bl. O. 65. 17 1/2 W. .57 also burried a lime stone 15 inches long 6 wide and 3 inches thick even with the surface

Copied from P. 29 Vol. 1. Original County Surveyors Record