

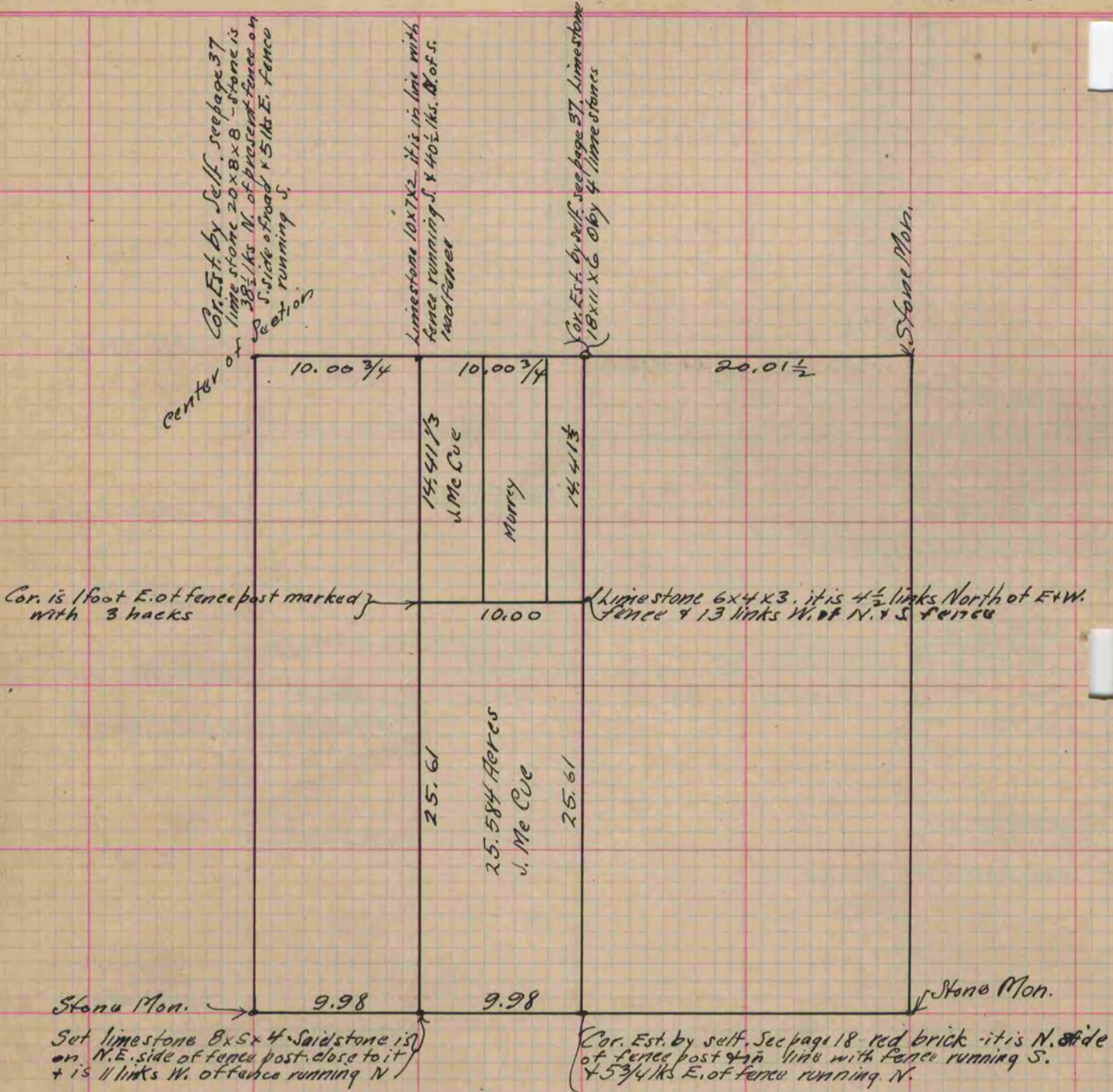
MICROFILMED PLAT AND RECORD

Of a Survey on ^{S.E. 1/4} Section 31 T 3 R 13 E. of the 4 P. M. in Harmony Township
Rock County, Wisconsin, made December the 29 1874

I hereby certify that the following is a correct record of said survey as made by me.

COUNTY BUILDING
CITY OF JANESVILLE

(Signed) Edward Roger
R.H.B. County Surveyor.



Copied from page 136 Vol. 2. Original County Surveyors Record.