

MICROFILMED

PLAT AND RECORD

321
V-2

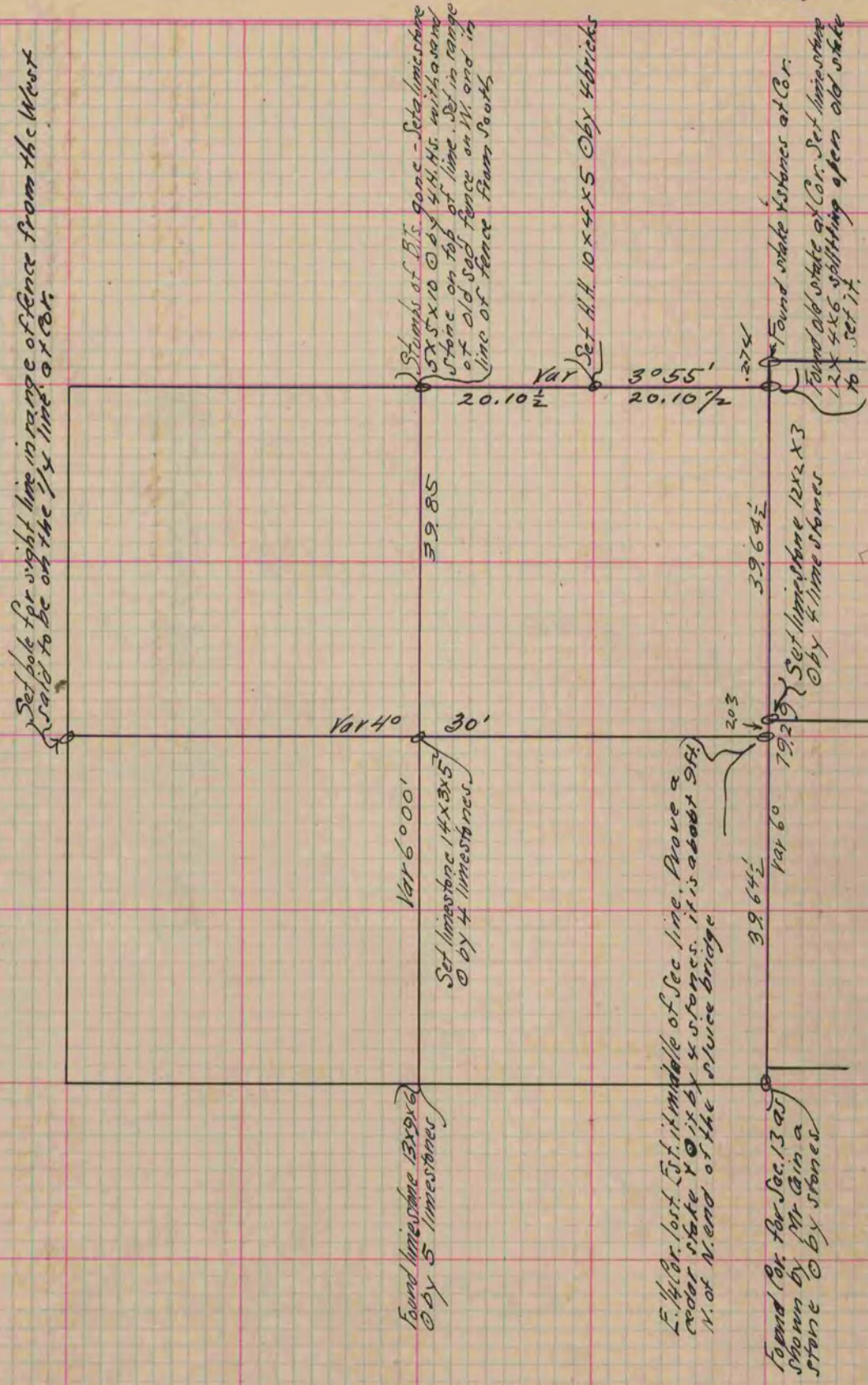
COUNTY BUILDING
CITY OF JANESVILLE

Of a Survey on Section 13 T 3 R 10 E. of the 4 P. M. in Magnolia Township

Rock County, Wisconsin, made May the 23rd 12th 1881

I hereby certify that the following is a correct record of said survey as made by me.

(Signed) R. K. Lee
R.H.B. County Surveyor.



Copied from page 265 Vol. 2. County Surveyors Record.