

# MICROFILMED PLAT AND RECORD

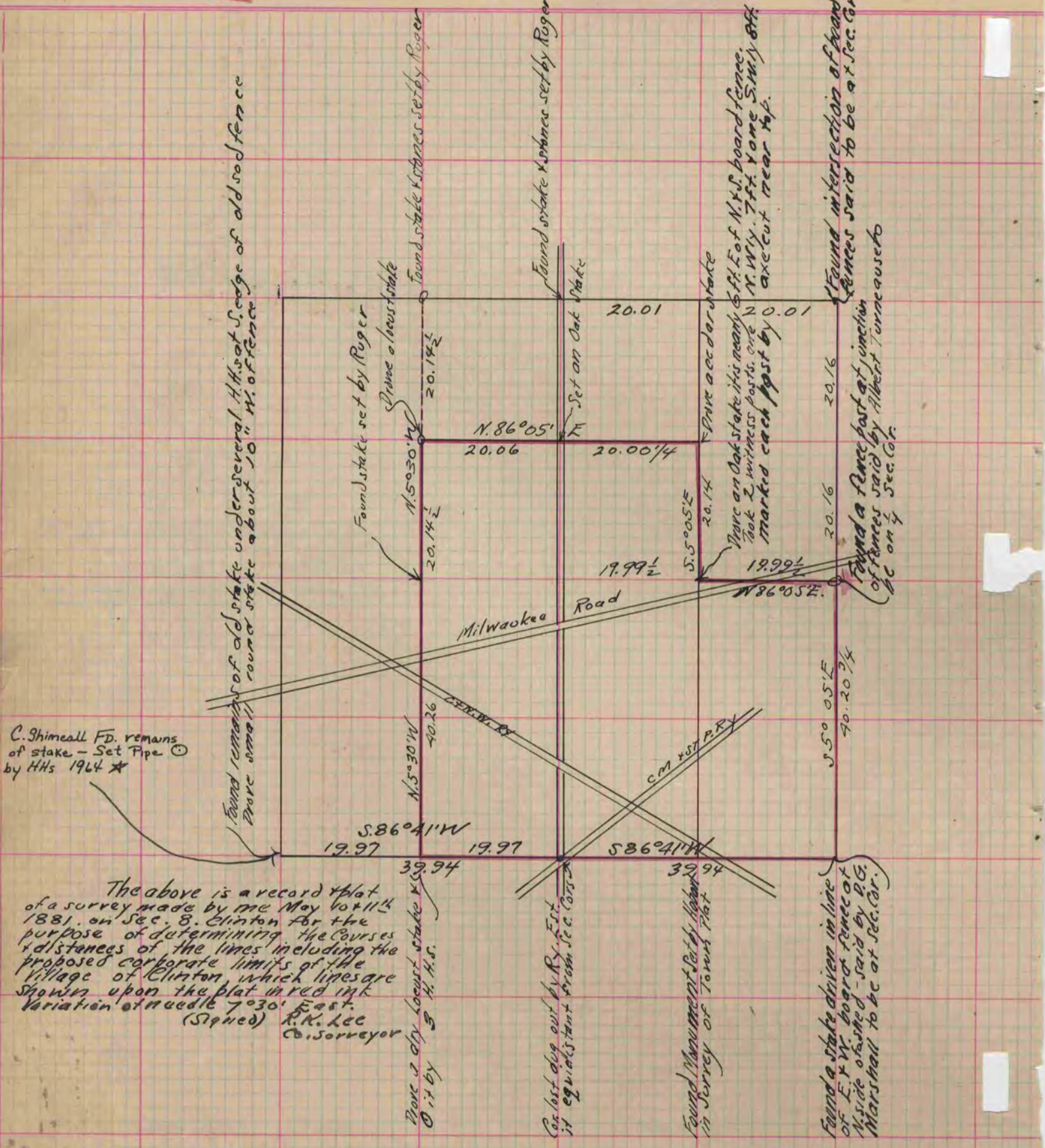
Of a Survey on Section 8 T 1 R 14 E. of the 4 P. M. in Clinton Township

Rock County, Wisconsin, made May the 10<sup>th</sup> 11<sup>th</sup> 1881

I hereby certify that the following is a correct record of said survey as made by me.

COUNTY BUILDING  
CITY OF JANESVILLE

(Signed) R. K. Lee  
R. H. B.  
Rept  
County Surveyor.



Copied from Page 264 Vol. 2 County Surveyors Record

\* Copied from Beloit Records  
12/11/75  
G.D.