

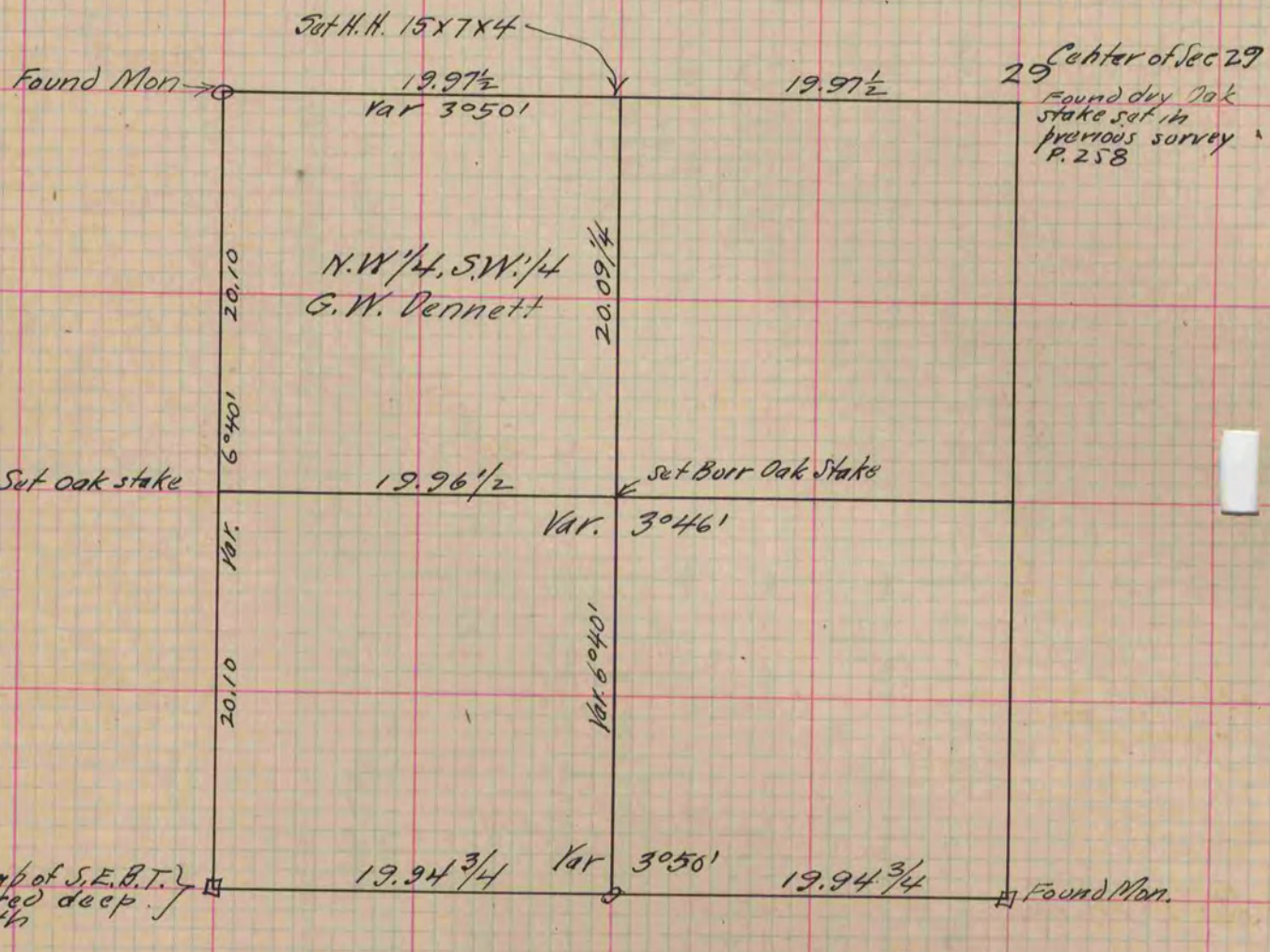
MICROFILMED PLAT AND RECORD

Of a Survey on Section ^{sw 1/4} 29 T 4 R 13 E. of the 4 P. M. in Milton Township
Rock County, Wisconsin, made September the 30th 1880

I hereby certify that the following is a correct record of said survey as made by me.

COUNTY BUILDING
CITY OF JANESVILLE

(Signed) R. K. Lee
R. H. B. Dep't.
County Surveyor.



Copied from P. 260 Vol. 2. County Surveyors Record