

PLAT AND RECORD

91
V-2

MICROFILMED

COUNTY BUILDING 1
CITY OF JANESVILLE

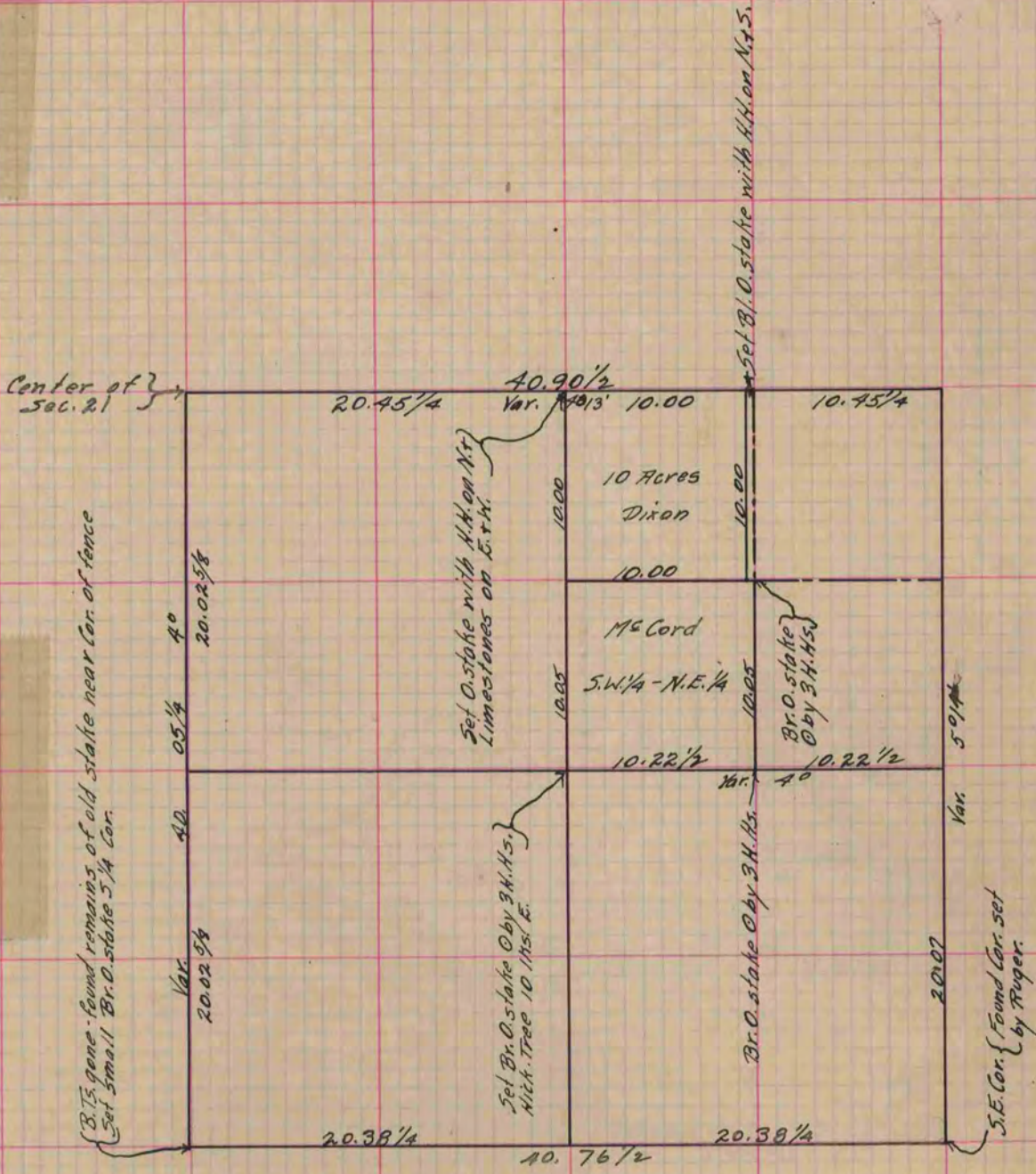
Of a Survey on Section 21 T 4 R 14 E. of the 4 P. M. in Lima Township

Rock County, Wisconsin, made April the 21st, 22nd + 23rd 1872

I hereby certify that the following is a correct record of said survey as made by me.

(Signed) R. H. Lee
R. H. B.

{Deputy
County Surveyor.



Copied from Page 55 Vol. 2 Original County Surveyor's Record