

MICROFILMED

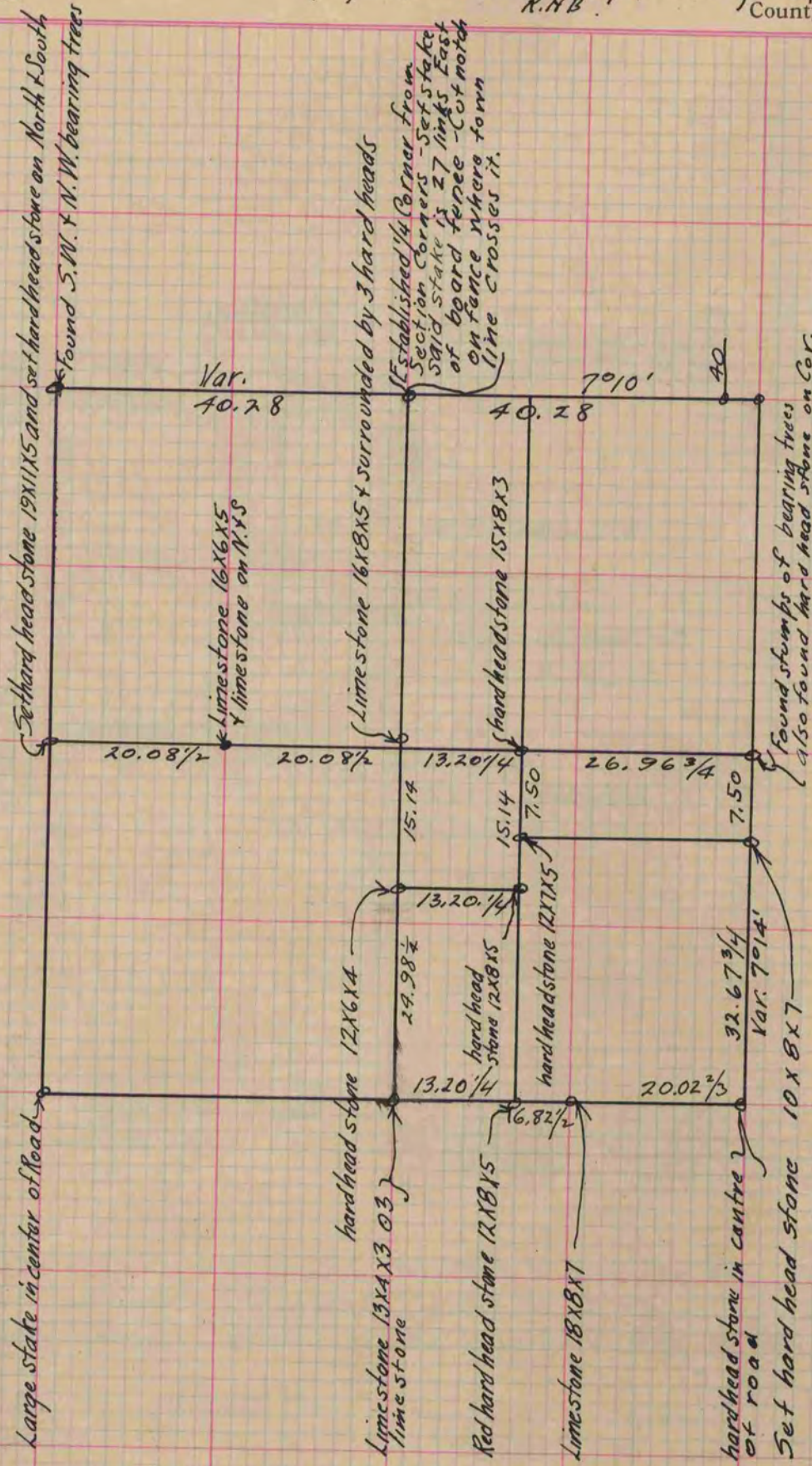
PLAT AND RECORD

Of a Survey on Section 2 T 3 R 12 E. of the 4 P. M. in Janesville Township
Rock County, Wisconsin, made February the 23 & 24 1870

I hereby certify that the following is a correct record of said survey as made by me.

COUNTY BUILDING
CITY OF JANESVILLE

(Signed) Edward Roger } Deputy
R.H.B. County Surveyor.



Copied from lower 1/2 of Page 16 Vol. 2 Original County Surveyors Record