

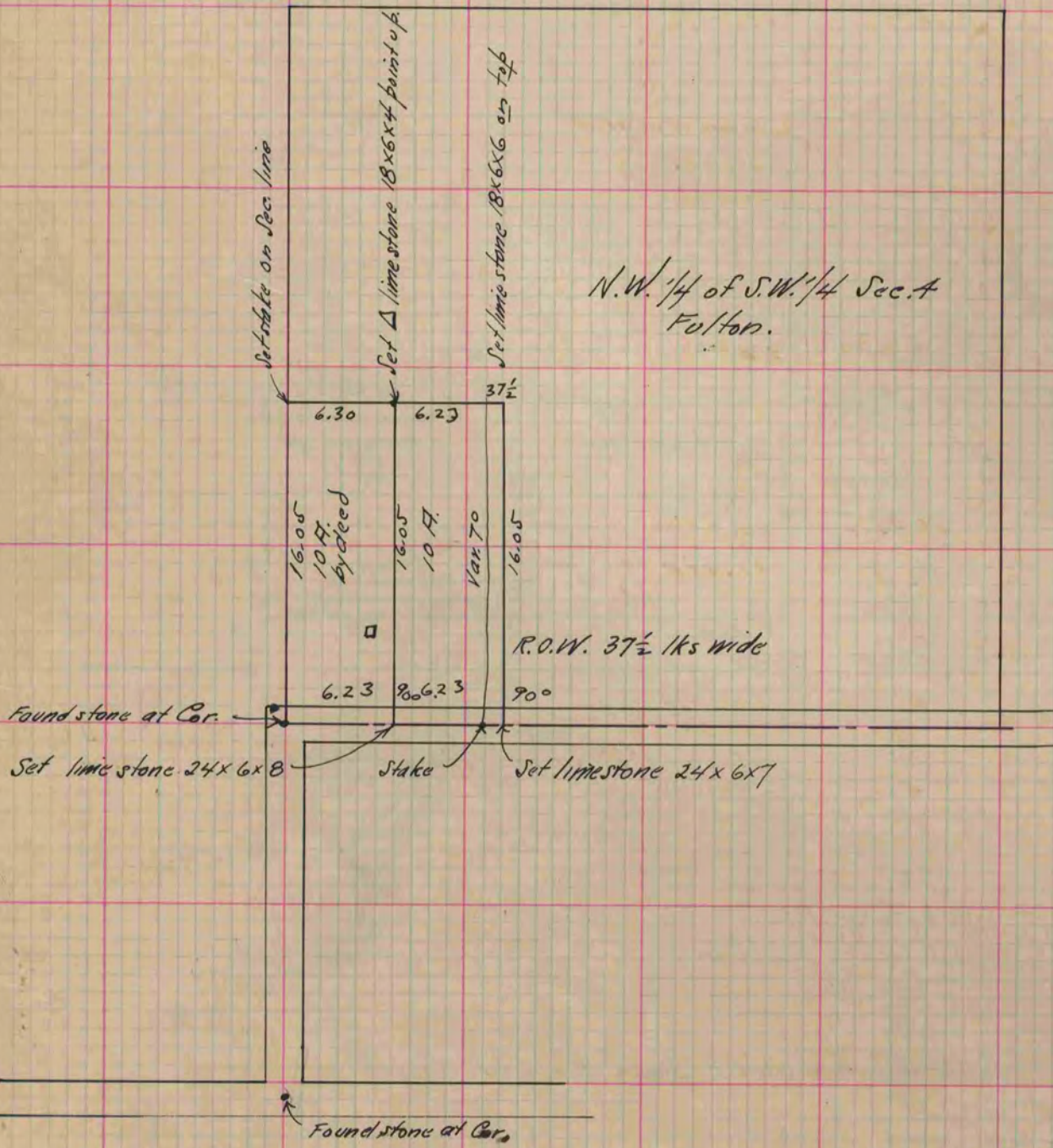
MICROFILMED PLAT AND RECORD

Of a Survey on Section A T 4 R 12 E. of the 4 P. M. in Fulton Township
Rock County, Wisconsin, made June the 3^d 1887

I hereby certify that the following is a correct record of said survey as made by me.

COUNTY BUILDING
CITY OF JANESVILLE

(Signed) R. K. Lee
R.H.B. Deputy County Surveyor.



Copied from P. 316 Vol. 2, County Surveyors Record