

MICROFILMED

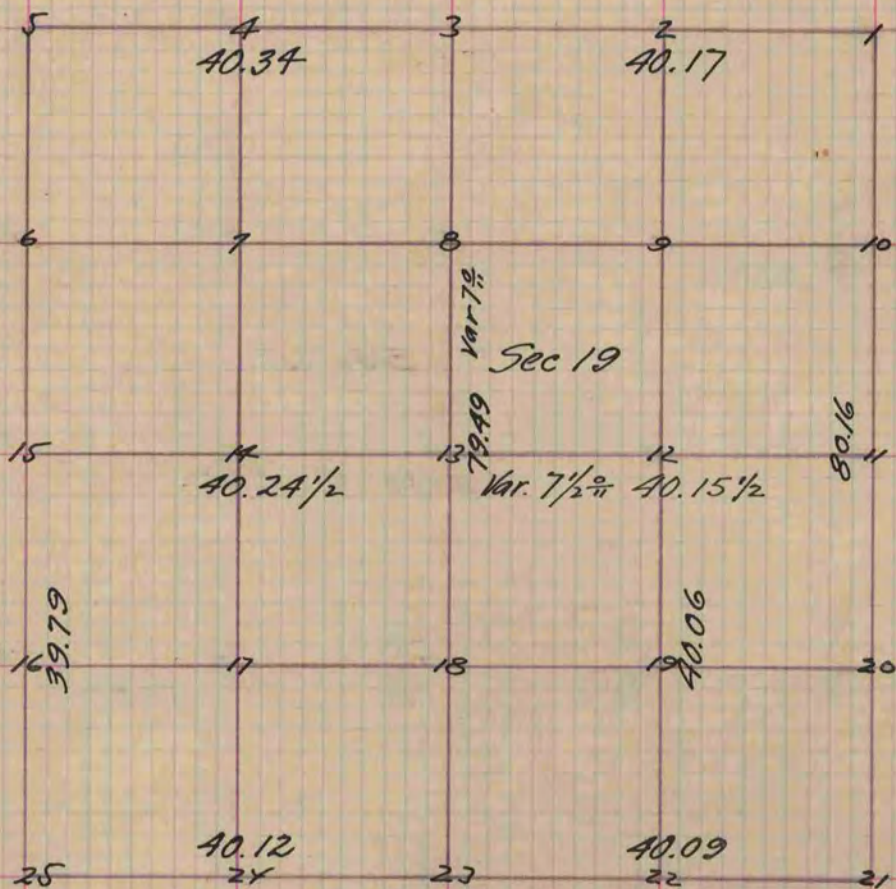
PLAT AND RECORD

Of a Survey on Section 19 T 2 R 11 E. of the 4 P. M. in Plymouth Township
 Rock County, Wisconsin, made April the 19th 1854

I hereby certify that the following is a correct record of said survey as made by me.

COUNTY BUILDING
 CITY OF JANESVILLE

(Signed) Peter McVean
 R. H. B. County Surveyor.



- Figure 17 represents the centre of the South West quarter Section
 Fig. 17 Burried a lime stone even with the surface of the ground
 one foot long 8 inches wide and Six inches thick
 " 14 Burried a round stone 8 inches long 3 inches below the surface
 of the ground
 " 10. Br. O. 14 S. 87 E. 30 No other
 " 2 Bl. O. 25 N 21 1/2 W 1.22 Also Bl. O 22 N 43 W 190
 " 7 Post in Prairie
 " 12 Post on Gravel Knoll
 " 24 Burried a stone the top even with the surface, a gray stone
 12 inches long and 8 inches thick

Copied from Page 23 Vol. 1. County Surveyors Record