

MICROFILMED

PLAT AND RECORD

Of a Survey on Section 19 T 4 R 13 E. of the 4 P. M. in Milton Township

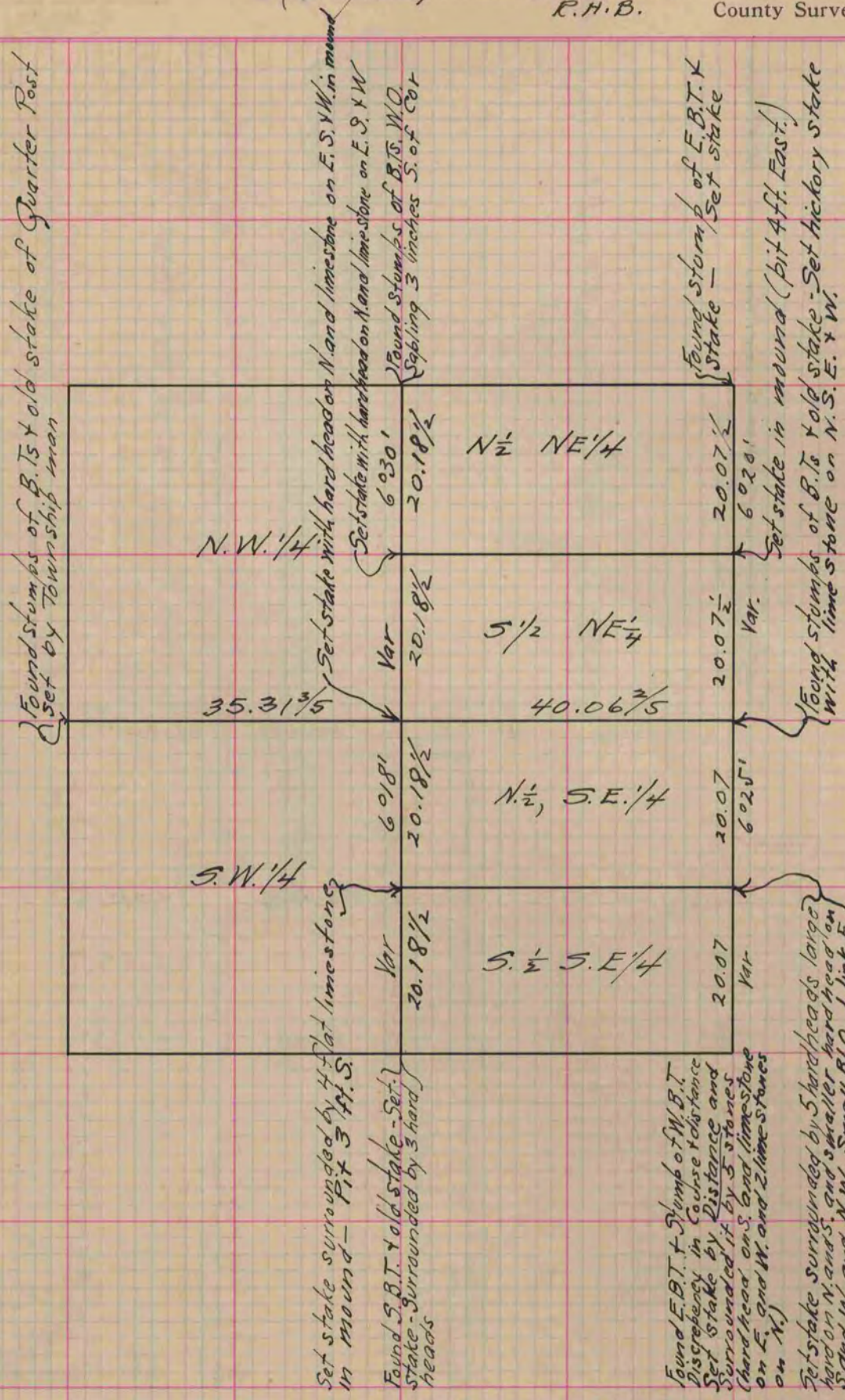
Rock County, Wisconsin, made November the 14th & 15th 1866

I hereby certify that the following is a correct record of said survey as made by me.

COUNTY BUILDING
CITY OF JANESVILLE

(Signed) S. D. Locke
R.H.B.

County Surveyor.



Copied from Page 240 Vol. 1. Original County Surveyors Record