

PLAT AND RECORD

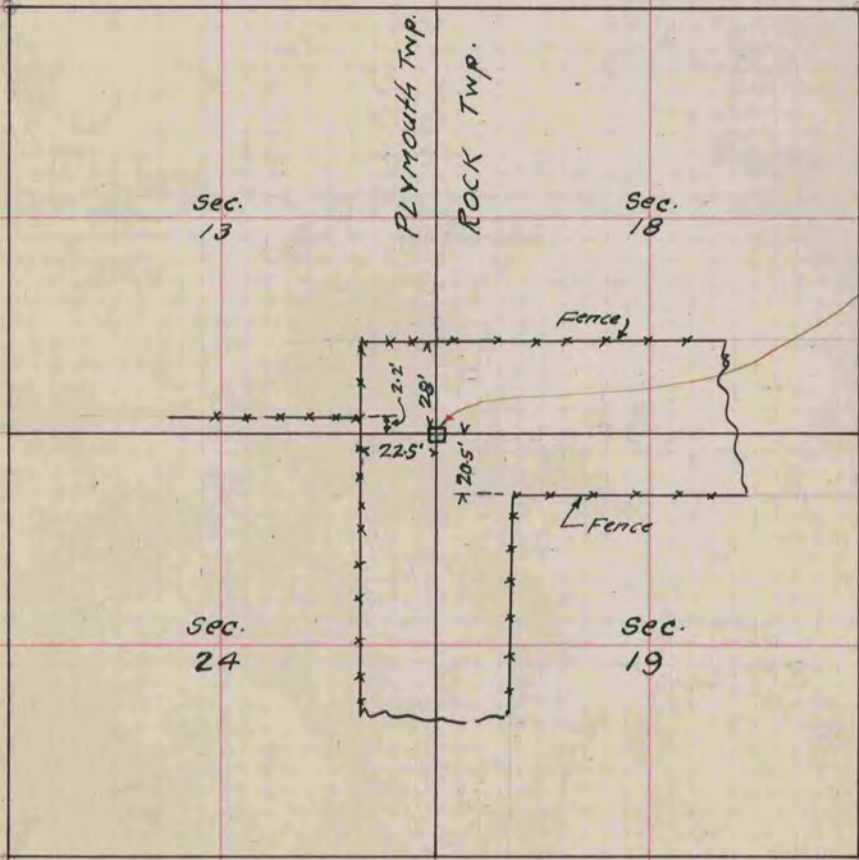
COUNTY BUILDING
CITY OF JANESVILLE

Of a Survey on Section 18+19 T 2N. R 12 E. of the 4 P. M. in Rock Township
13+24 T. 2N. R. 11 E. " " " " " " " " "Plymouth
Rock County, Wisconsin, made May the 12th 1932.

I hereby certify that the following is a correct record of said survey as made by me.

MICROFILMED

B. J. Surrency
County Surveyor.



Found 6"x6"x40" Cut stone monument 28" above ground Marked 13, 18, 19, 24. Reset same and O H Hs

- New Bearing Trees:*
 10" Willow S. 8° W. 47.3'
 13" Oak S. 32° 25' W. 114.4'
 12" Oak S. 58° W. 101.8'