

MICROFILMED

PLAT AND RECORD

317
V-2

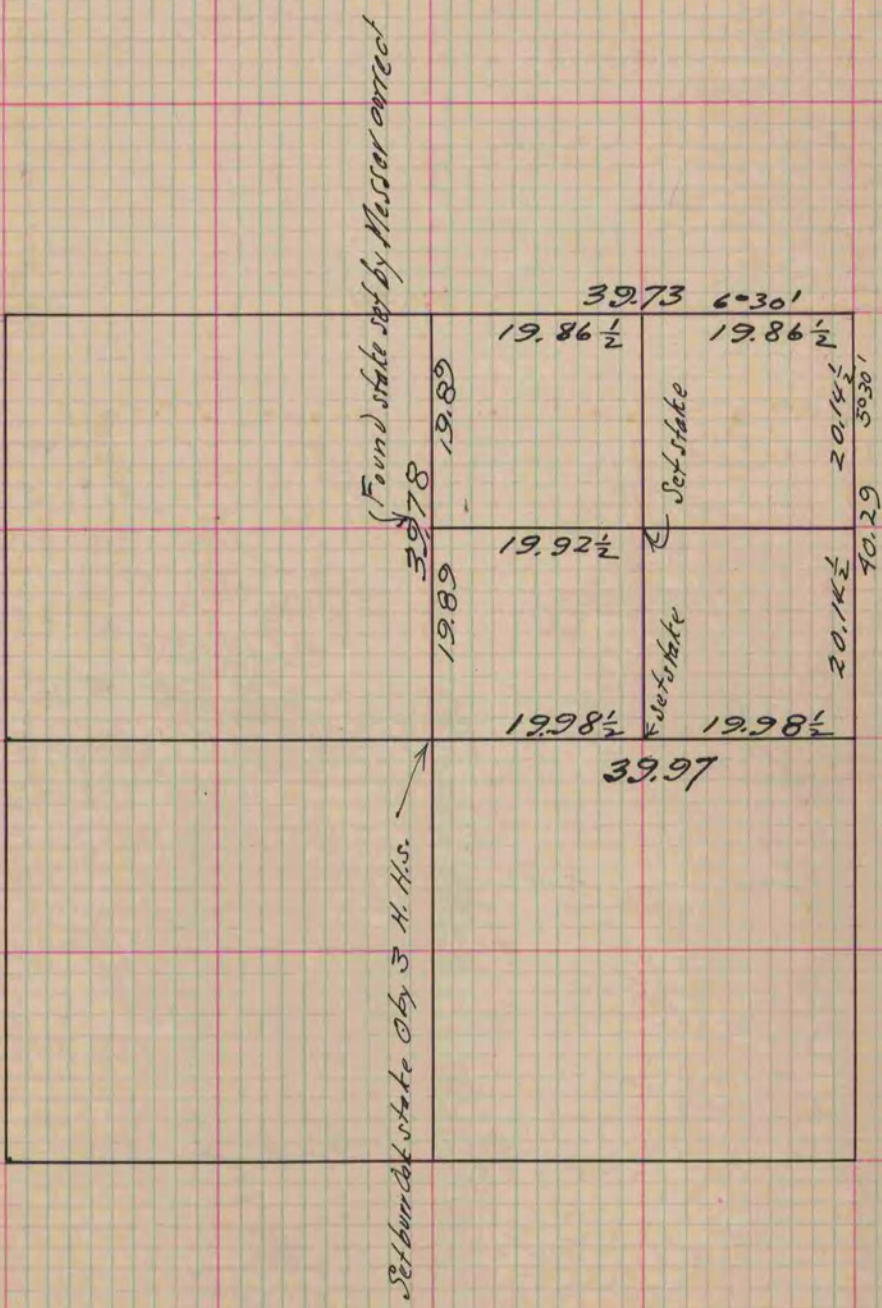
COUNTY BUILDING
CITY OF JANESVILLE

Of a Survey on Section 36 T 1 R 11 E. of the 4 P. M. in Newark Township

Rock County, Wisconsin, made April the 22^d 1881

I hereby certify that the following is a correct record of said survey as made by me.

(Signed) R. K. Lee Dept. R. H. B. County Surveyor.



Copies from p. 262 Vol. 2. County Surveyors Record