

PLAT AND RECORD

301
V-2

MICROFILMED

COUNTY BUILDING
CITY OF JANESVILLE

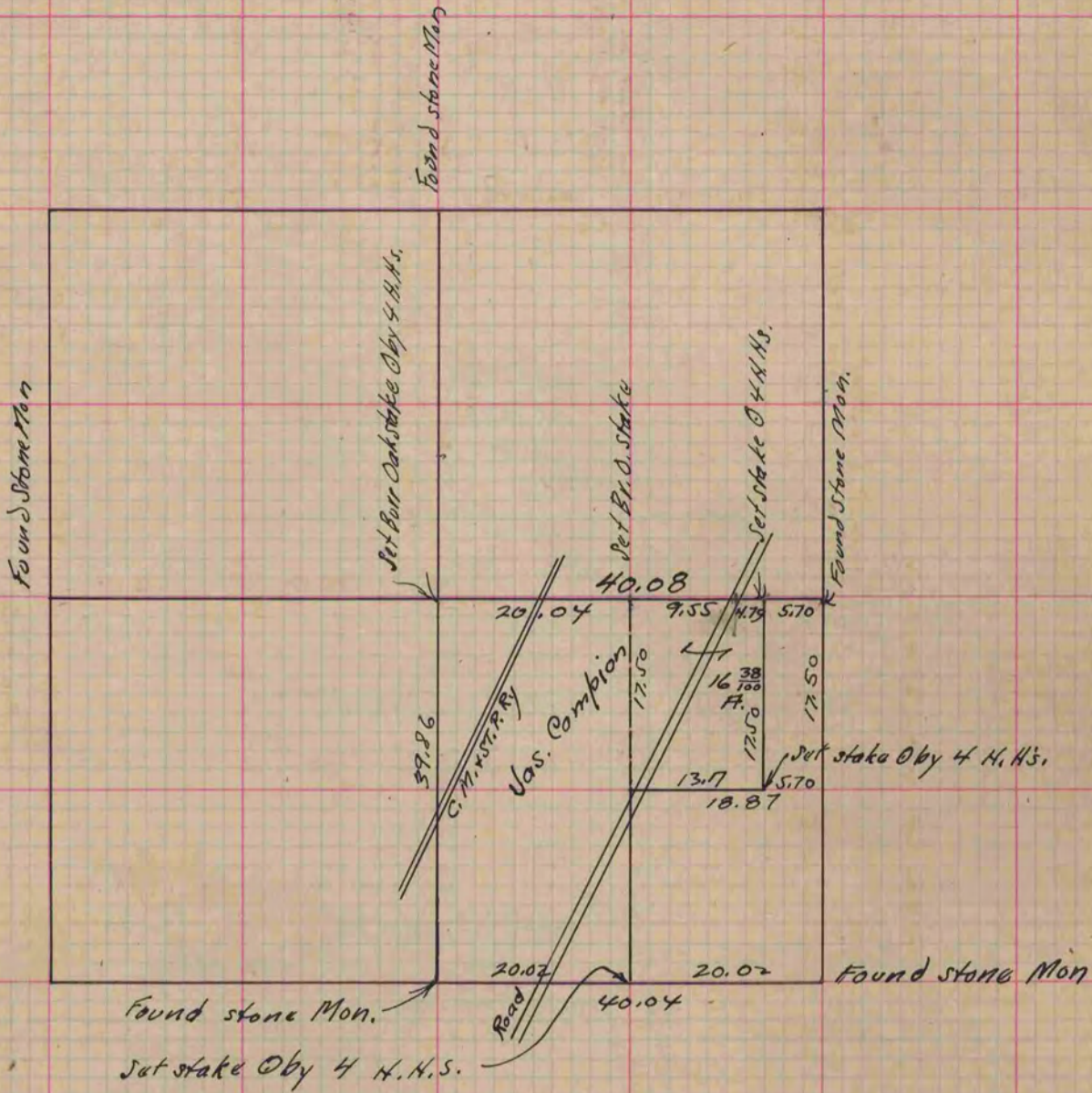
Of a Survey on Section 5 T 3 R 13 E. of the 4 P. M. in Harmony Township

Rock County, Wisconsin, made May the 18 + 19 1880

I hereby certify that the following is a correct record of said survey as made by me.

(Signed) R. K. Lee Deputy
R.H.B. County Surveyor.

Self Chapman chainman



Copied from p. 252 Vol. 2. County Surveyors Record.