

MICROFILMED

# PLAT AND RECORD

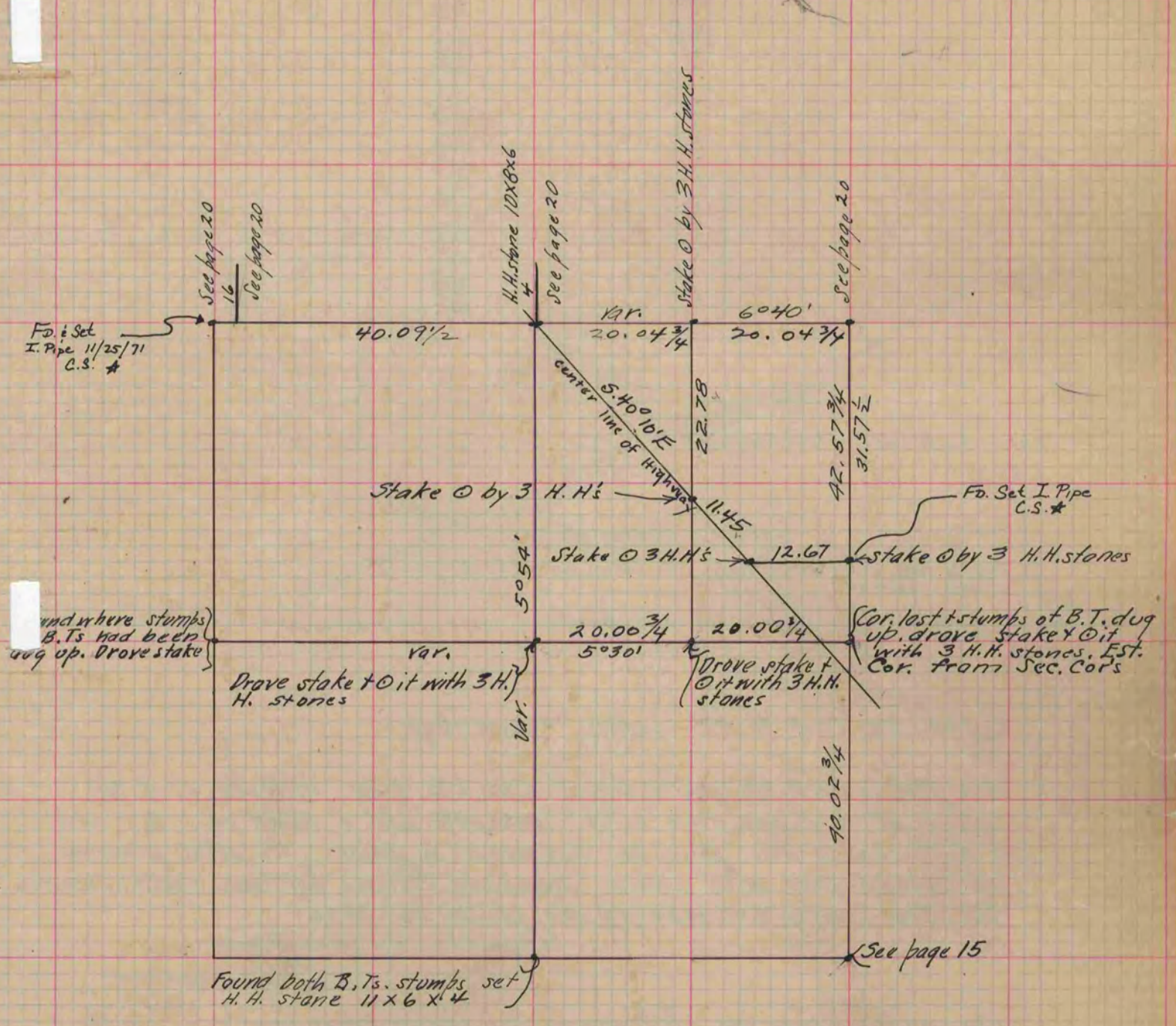
COUNTY OF DUNDAS  
CITY OF JANESVILLE

Of a Survey on Section 4 T 3 R 12 E. of the 4 P. M. in Janesville Township  
Rock County, Wisconsin, made March the 10 & 11 1876

I hereby certify that the following is a correct record of said survey as made by me.

COUNTY BUILDING  
CITY OF JANESVILLE

(Signed) Edward Ruger  
R.H.B. County Surveyor.



\* Copied from Beloit Records  
12/11/75  
G.O.

Copied from p. 161 Vol. 2 Original County Surveyor's Record