

MICROFILMED

# PLAT AND RECORD

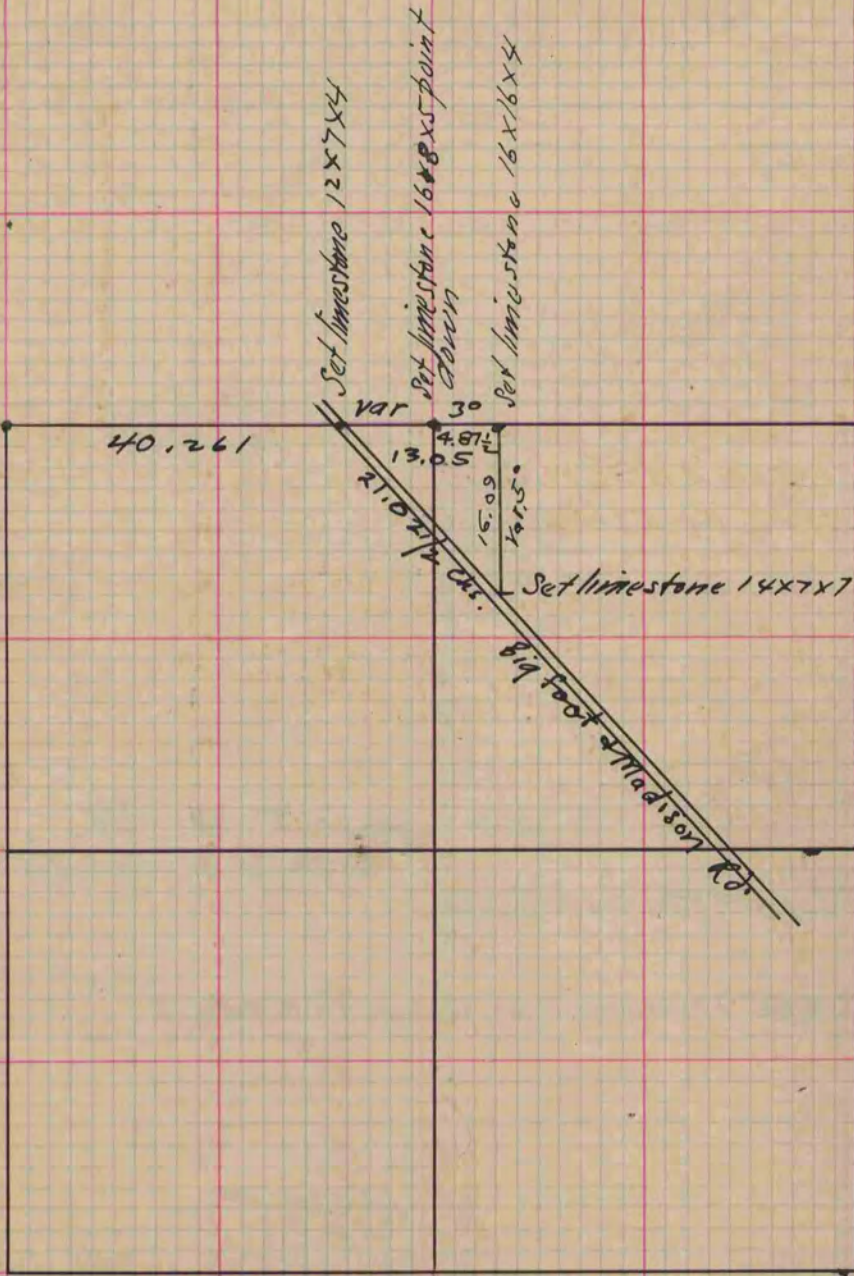
271  
v-2

COUNTY BUILDING  
CITY OF JANESVILLE

Of a Survey on Section 34 T 3 R 14 E. of the 4 P. M. in Johnstown Township  
Rock County, Wisconsin, made January the 13 1886

I hereby certify that the following is a correct record of said survey as made by me.

(Signed) Edward Ruger  
R. H. B. County Surveyor.



Copied from Page 224 Vol. 2. County Surveyors Records.