

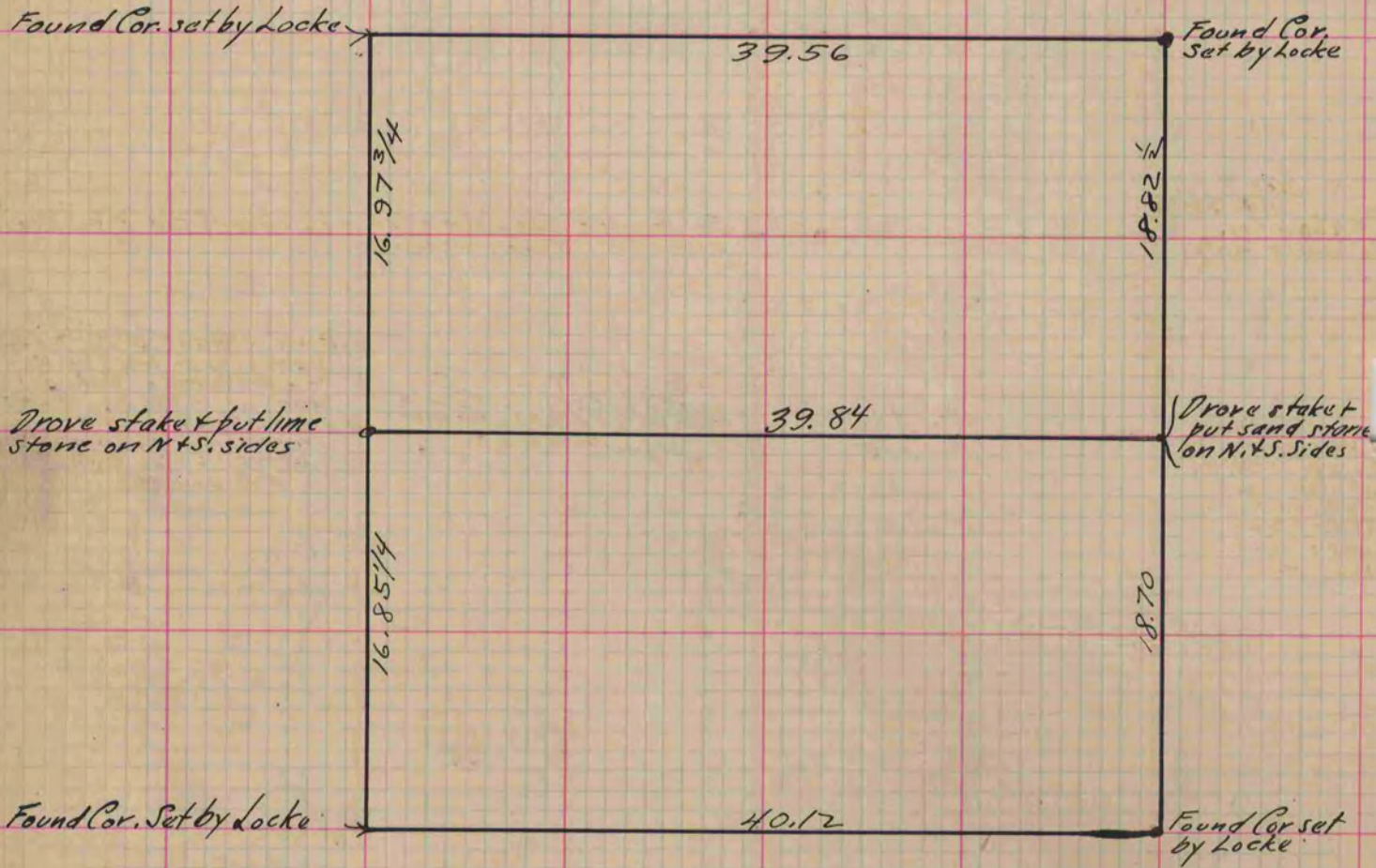
130  
V-2 MICROFILMED PLAT AND RECORD

Of a Survey on Section <sup>N.W. 1/4</sup> 1 T 2 R 10 E. of the 4 P. M. in Spring Valley Township  
Rock County, Wisconsin, made April the 3rd 1874

I hereby certify that the following is a correct record of said survey as made by me.

COUNTY BUILDING  
CITY OF JANESVILLE

Signed Edward Ruger  
R. H. B. County Surveyor.



Copied from Page 88 Vol 2 Original County Surveyors Record