

# PLAT AND RECORD

31  
V-2

ROFILMED

Survey on Section 20 T 3 R 10 E. of the 4 P. M. in Magnolia Township  
County, Wisconsin, made June the 1st & 2nd 1870

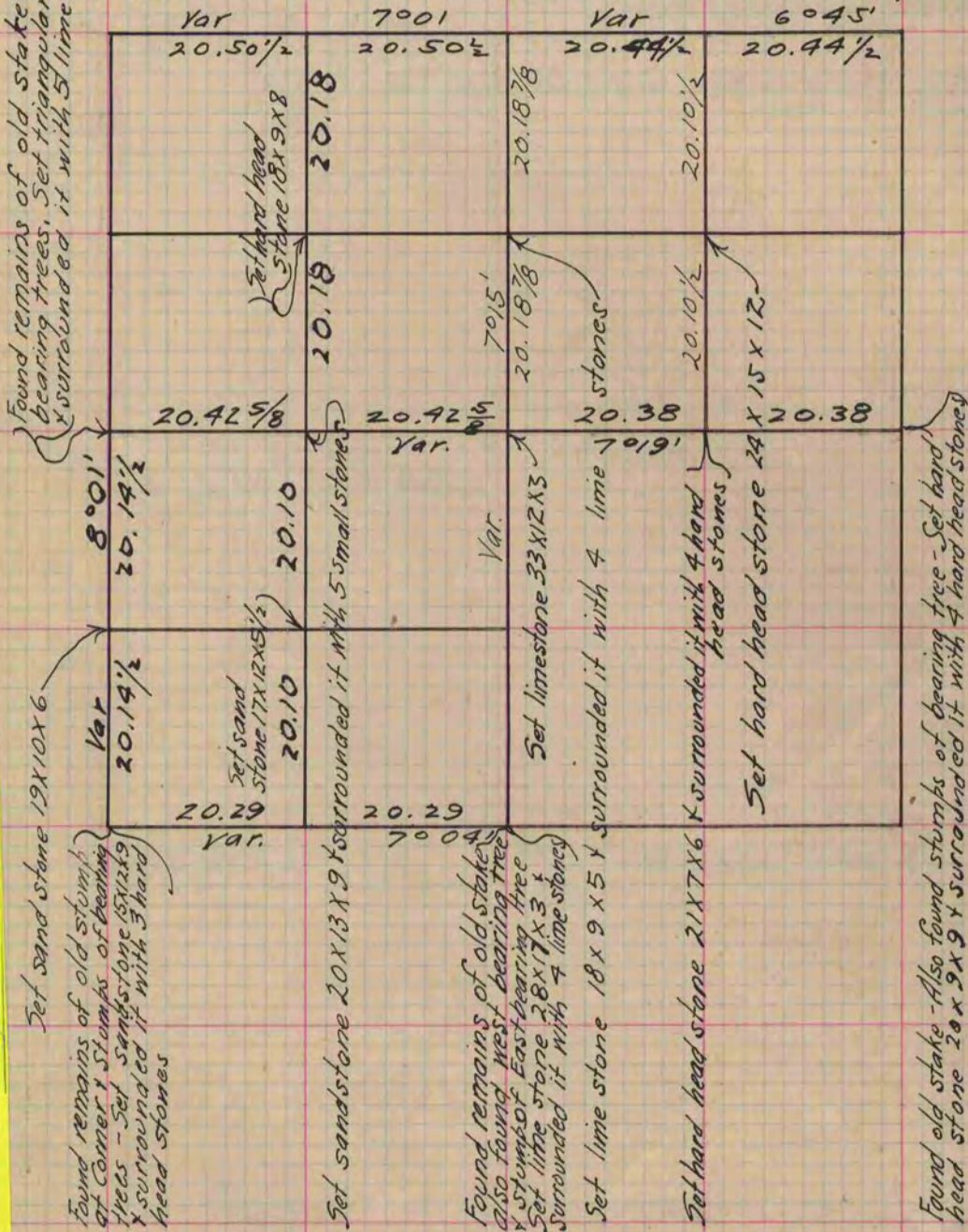
I hereby certify that the following is a correct record of said survey as made by me.

COUNTY BUILDING  
CITY OF JANESVILLE

(Signed) Edward Ruger Deputy  
R.H.B. County Surveyor.

Found remains of old stake also found stumps of bearing trees. Set triangular lime stone 20x15x3 1/2 & surrounded it with 5 lime stone

For Corners on this line See Section 17 Page 21 (P. 28 this book) R.H.B.



Copied from Page 22 Vol. 1. Original County Surveyors Record