

PLAT AND RECORD

MICROFILMED

BROOKLYN T.W.P.

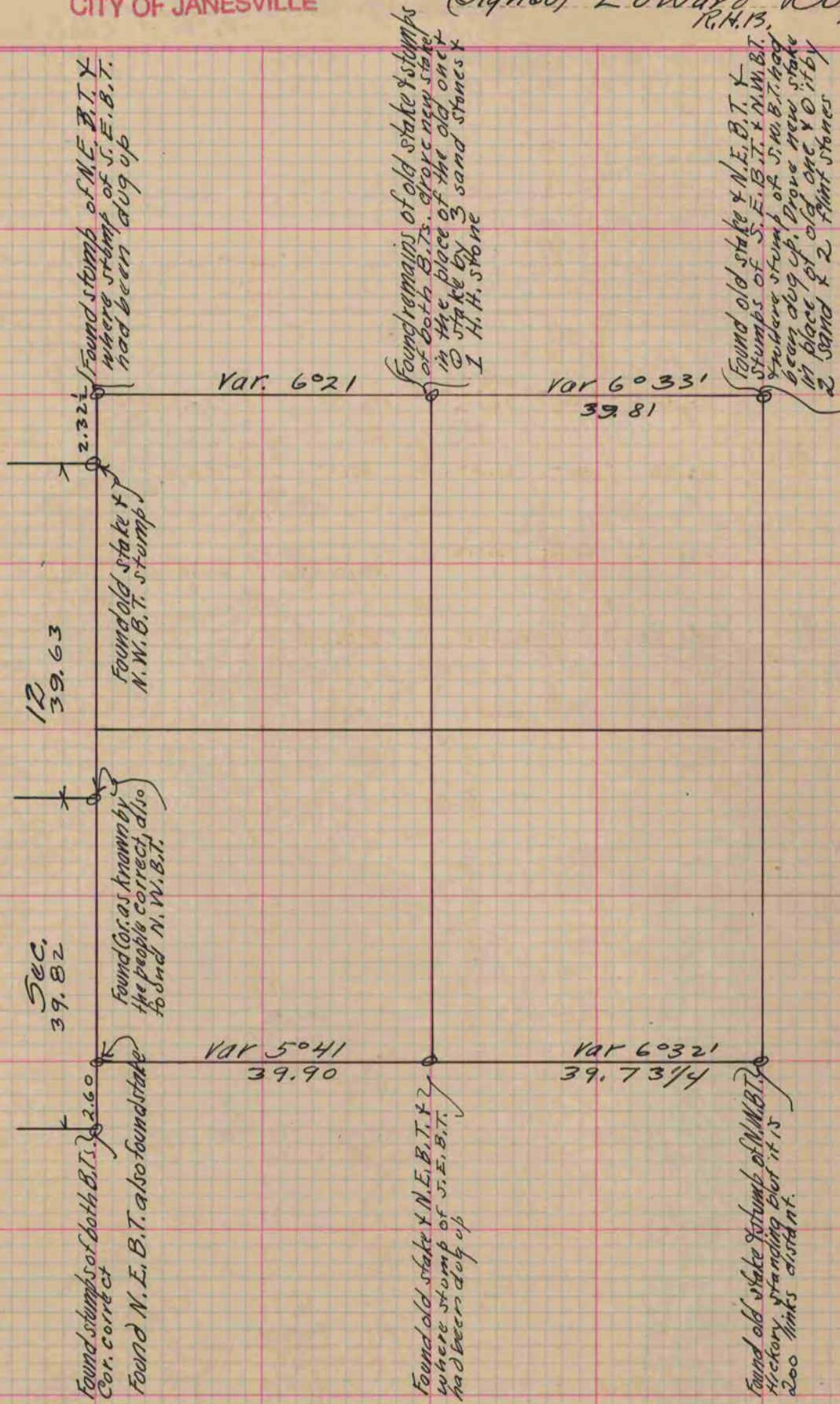
Of a Survey on Section 7 T 4 R 9 E. of the 4 P. M. in Greene Co. Township

County, Wisconsin, made September the 7, 8 & 9 1876

I hereby certify that the following is a correct record of said survey as made by me.

COUNTY BUILDING
CITY OF JANESVILLE

(Signed) Edward Ruger
R.H.B. County Surveyor.



Copied from Page 189 Vol. 2. County Surveyors Record.