

PLAT AND RECORD

MICROFILMED

COUNTY BUILDING
CITY OF JANESVILLE

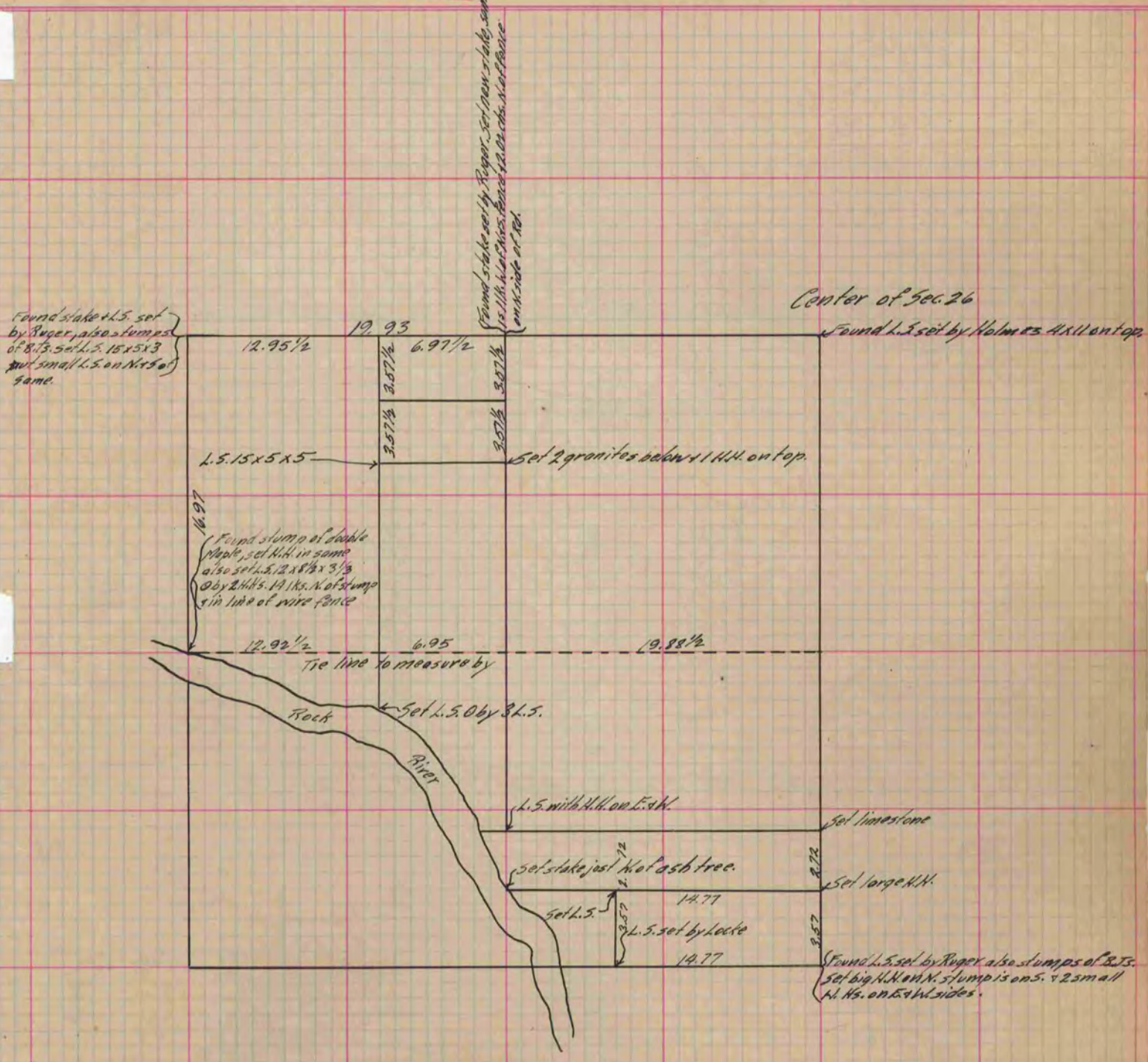
Of a Survey on ^{S.W. 1/4} Section 26 T 2 R 12 E. of the 4 P. M. in Rock Township

Rock County, Wisconsin, made December the 4th 1889

I hereby certify that the following is a correct record of said survey as made by me.

COUNTY OF ROCK
CITY OF JANESVILLE

(Signed) O. G. Bleedorn Dep.
R. H. B. County Surveyor.



Copied from P. 342 Vol. 2 County Surveyor's Record.