

PLAT AND RECORD

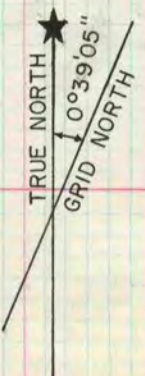
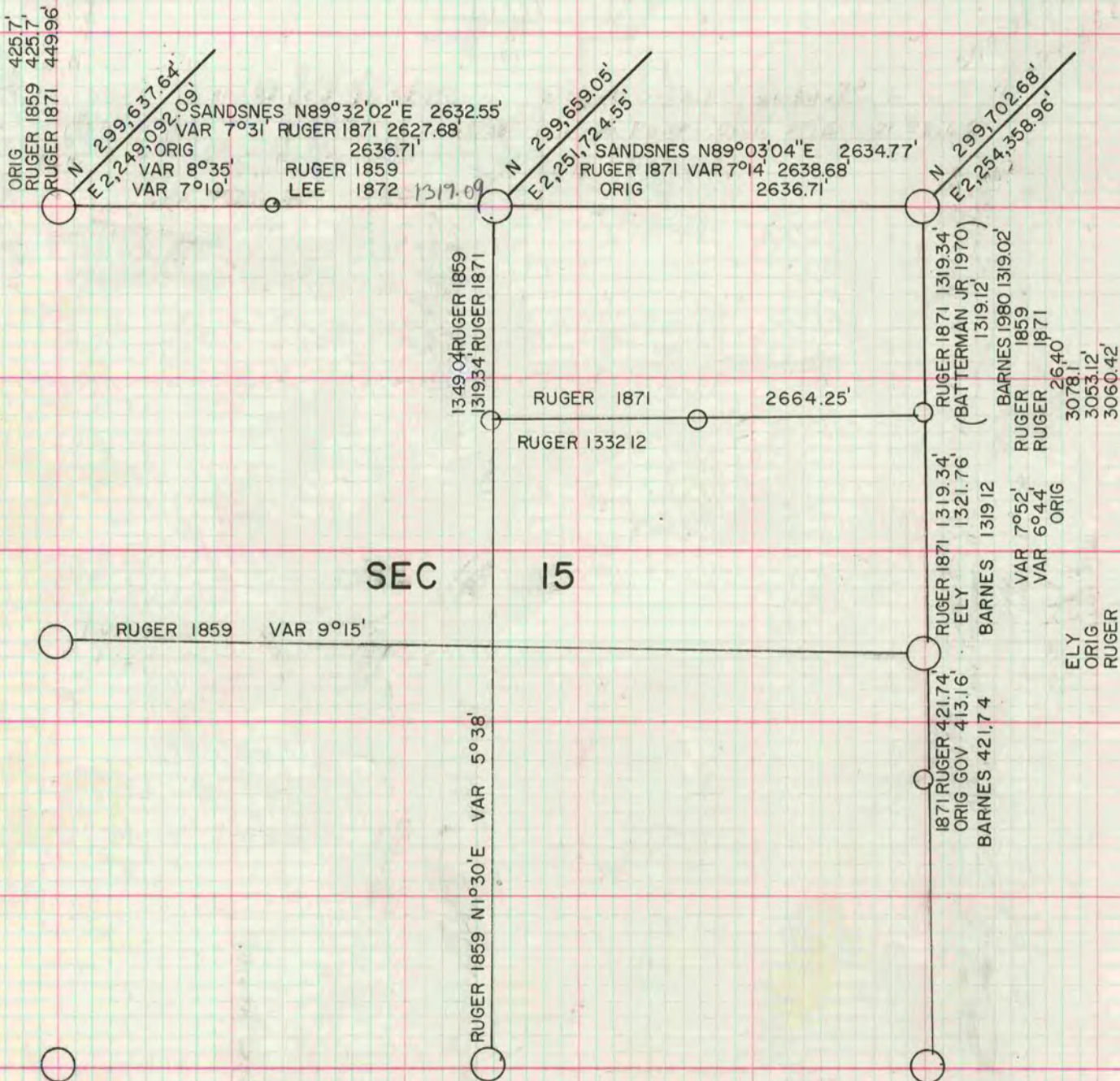
Of a Survey on Section **15** T **4** R **12** E. of the 4 P. M. in
 Rock County, Wisconsin, made **DEC.** the

I hereby certify that the following is a correct record of said survey as made by me.

**COUNTY BUILDING
 CITY OF JANESVILLE**



MICROFILMED



COORDINATES BASED ON THE WISCONSIN STATE PLANE
 COORDINATE SYSTEM SOUTH ZONE., SEE VOL 5 PG 447