

# MICROFILMED PLAT AND RECORD

Of a Survey on Section 27 T 4 R 10 E. of the 4 P. M. in Union Township

Rock County, Wisconsin, made August the 1855

I hereby certify that the following is a correct record of said survey as made by me.

COUNTY BUILDING  
CITY OF JANESVILLE

(Signed) Joseph Church  
County Surveyor.

*Starting Stone of Village of Evansville*

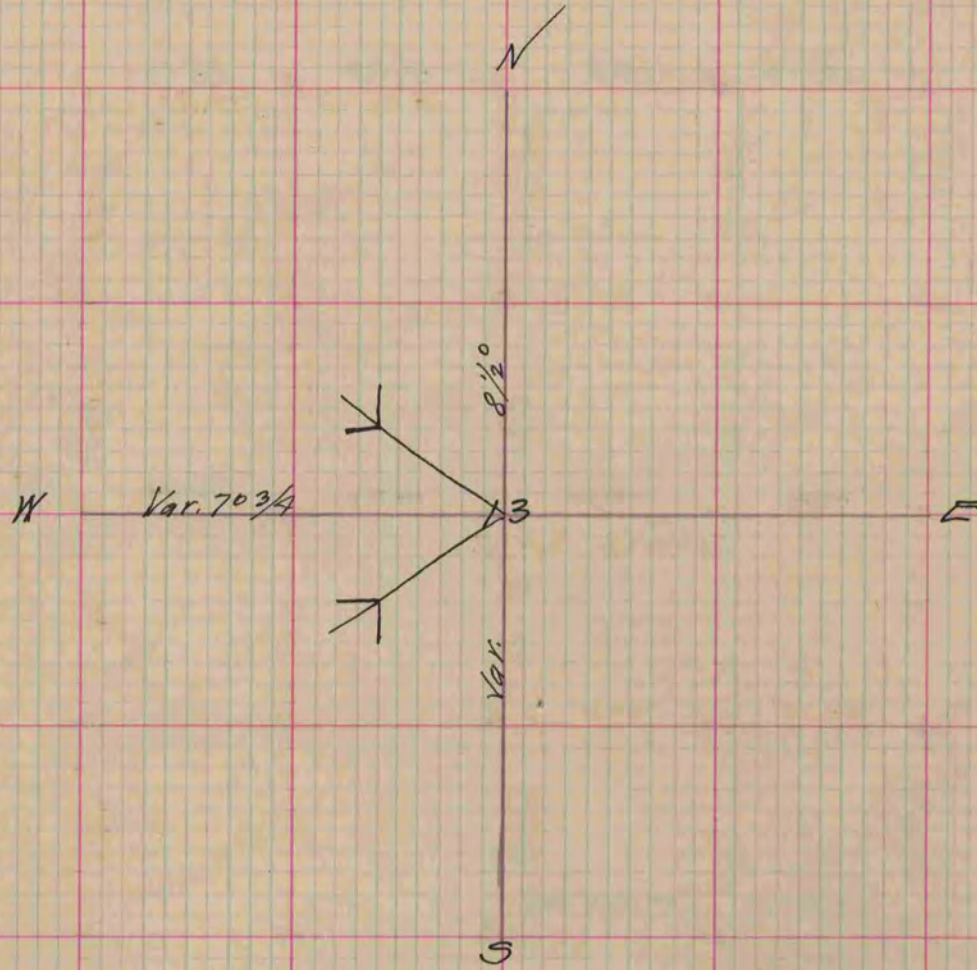


Fig. 13 Spencer house N.W. Corner  $N 74 \frac{1}{2} W$ . 163 links  
 Winston's Store house N.E. Corner  $S 57 \frac{1}{2} W$ . 153  $\frac{1}{2}$  links  
 Figure thirteen is in the centre of said section  
 the variations was taken without the variation of the Meridian line.

Copied from Page 47 Vol. 1 County Surveyors Record