

PLAT AND RECORD VOL. 6

71

Of a Survey on Section 3 T. 2 R. 12 E. of the 4 P. M. in ROCK Township
Rock County, Wisconsin, made JUNE the 6th 1868

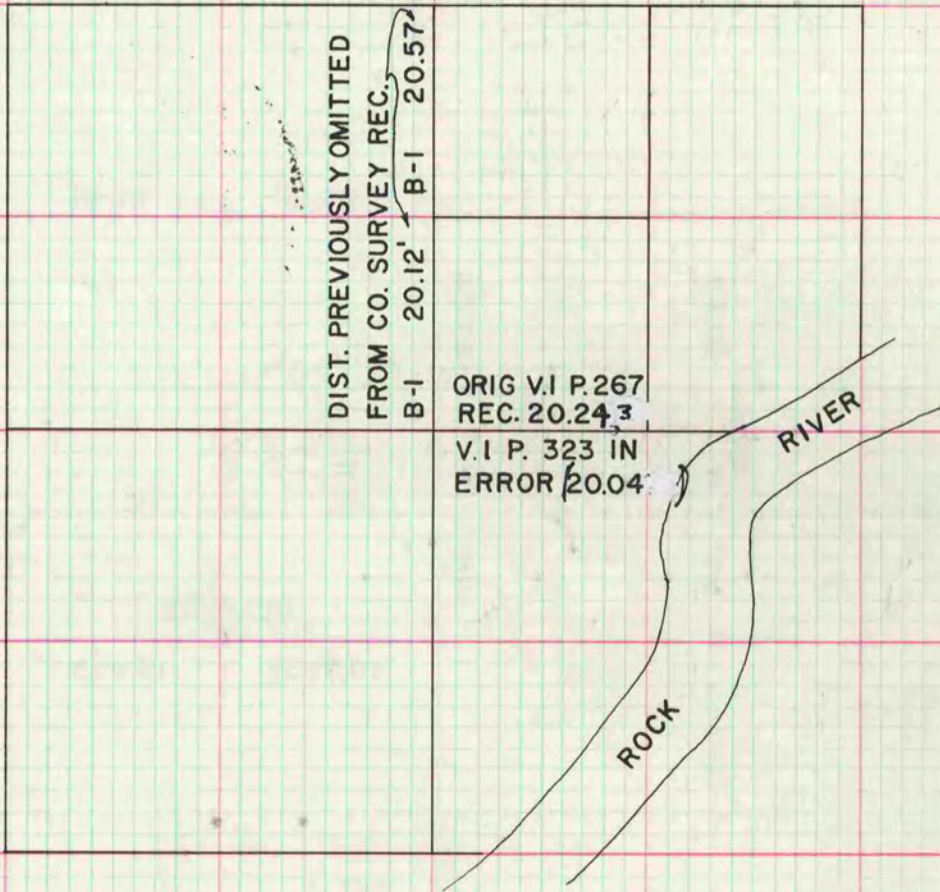
I hereby certify that the following is a correct record of said survey as made by me.

COUNTY BUILDING
CITY OF JANESVILLE

SIGNED R. LEE

County Surveyor.

THE GEO. D. BARNARD COMPANY, ST. LOUIS



MICROFILMED