

PLAT AND RECORD

3

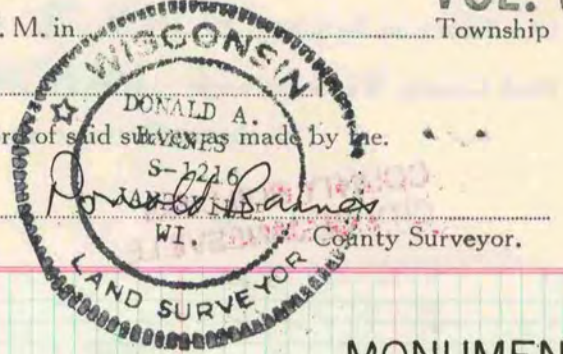
VOL. 6

Of a Survey on Section T R E. of the 4 P. M. in Township

Rock County, Wisconsin, made the

I hereby certify that the following is a correct record of said survey as made by me.

COUNTY BUILDING
CITY OF JANESVILLE



| TWP. | SEC. | COR. | REMARKS | MONUMENT |
|------------|------|--|--|-------------------------------------|
| BELOIT | 33 | NE | FD P.K. AS SET ON 2/26/76, UNDER THAT FD 1 1/2" x 22" I.P. & UNDER THAT FD 1/4" x 12" REROD | REPLACED WITH ALUMINUM MON. |
| BELOIT | 33 | N 1/4 | FD CUT "X" & UNDER THAT FD 1" x 24" I.P. | REPLACED WITH ALUMINUM MON. |
| BELOIT | 31 | NE | USED TIES ON RECORD | SET ALUMINUM MON. |
| BELOIT | 31 | N 1/4 | FD CUT "X" THAT AGREED WITH TIES | SET ALUMINUM MON. |
| FULTON | 35 | E 1/4 | FD BRASS PLUG & UNDER THAT FD I.P. | REPLACED WITH ALUMINUM MON. |
| FULTON | 10 | E 1/4 W 1/4 A/8/1988 D. Baines | FD BRASS PLUG | REPLACED WITH ALUMINUM MON. |
| JANESVILLE | 12 | NW | SEE VOL 5 PG 343 | SET ALUMINUM MON. |
| JANESVILLE | 2 | E 1/4 | FD 1" x 24" I.P. & 1' DEEP FD 2" x 36" I.P. & 1" I.P. PROTRUDING FROM BOTTOM | REPLACED 2" I.P. WITH ALUM. MON. |
| JANESVILLE | 11 | NE | FD BRASS PLUG | REPLACED WITH ALUMINUM MON. |
| JANESVILLE | 2 | NE | FD BRASS PLUG | REPLACED WITH ALUMINUM MON. |
| JANESVILLE | 33 | W 1/4 | FD PK & UNDER THAT FD 1" x 24" I.P. | SET ALUMINUM MON. |
| JANESVILLE | 33 | E 1/4 | FD PK & UNDER THAT FD 1/4" x 12" IRON PIN | SET ALUMINUM MON. |
| JANESVILLE | 33 | CENTER | FD PK AS SET BY RON COMBS (INTERSECTION OF 1/4 LINES) | SET ALUMINUM MON. |
| JANESVILLE | 34 | CENTER | FD PK & UNDER THAT FD 1/4" x 12" IRON PIN | SET ALUMINUM MON. |

MICROFILMED